

evolve

SOUTH BAY

curated living at the boulevards

Choosing a home isn't just about whether a space works for you. It's about the feeling you get when you're there. And with plenty of amenities that make it easy to be yourself, you'll truly feel at home at Evolve South Bay. Built with your lifestyle at heart, this stylish oasis offers thoughtfully designed new urban apartments in open concept 1-, 2-, and 3-bedroom layouts, flexible coworking spaces, private garages, and direct access to local freeways, popular beaches, and everything else Carson has to offer.



in your community

Resort-style Pool and Spa with Cabanas

Fitness Studio with State-of-the-Art Equipment

Yoga Room

Outdoor Fitness Features

Two-Story Clubhouse with Kitchen

Coworking Space with Private Offices

Outdoor Media Lounge

Social Lounge Areas with Firepits

Playground

Community Barbeques

Bocce Ball Court

Dog Park – We Love Pets!*

Package Lockers

Smoke- and Vape-free Community

Wi-Fi Access in Common Areas

Controlled Access Community

Excellent Access to the 110, 405 and 710 Freeways

Online Leasing, Applications and Rent Payment

Professional On-Site Management

**Select Locations Only. See Leasing Associate for Details.
Restrictions Apply.*



in your residence

Spacious 1-, 2-, and 3-Bedroom Residences

Open-Concept Living Areas

Stainless-steel Appliances

Quartz Countertops

Distinctive Wood-style Flooring

Gourmet Kitchens with Prep Islands*

Front-load Washers and Gas Dryers

Ceiling Fans in Living Room

Energy-Efficient LED lighting

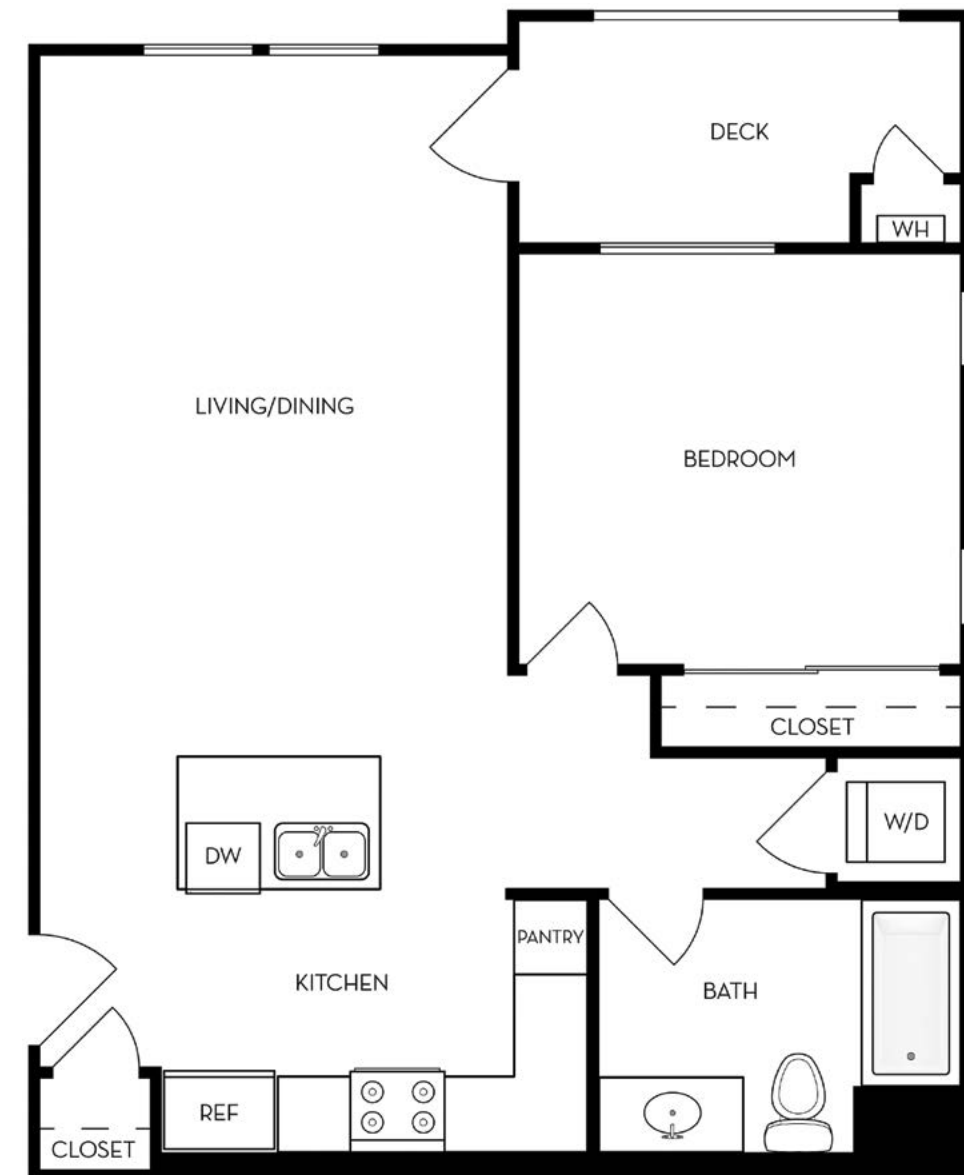
Covered Patios

Direct Access Garages*

**Select Locations Only. See Leasing Associate for Details.
Restrictions Apply.*



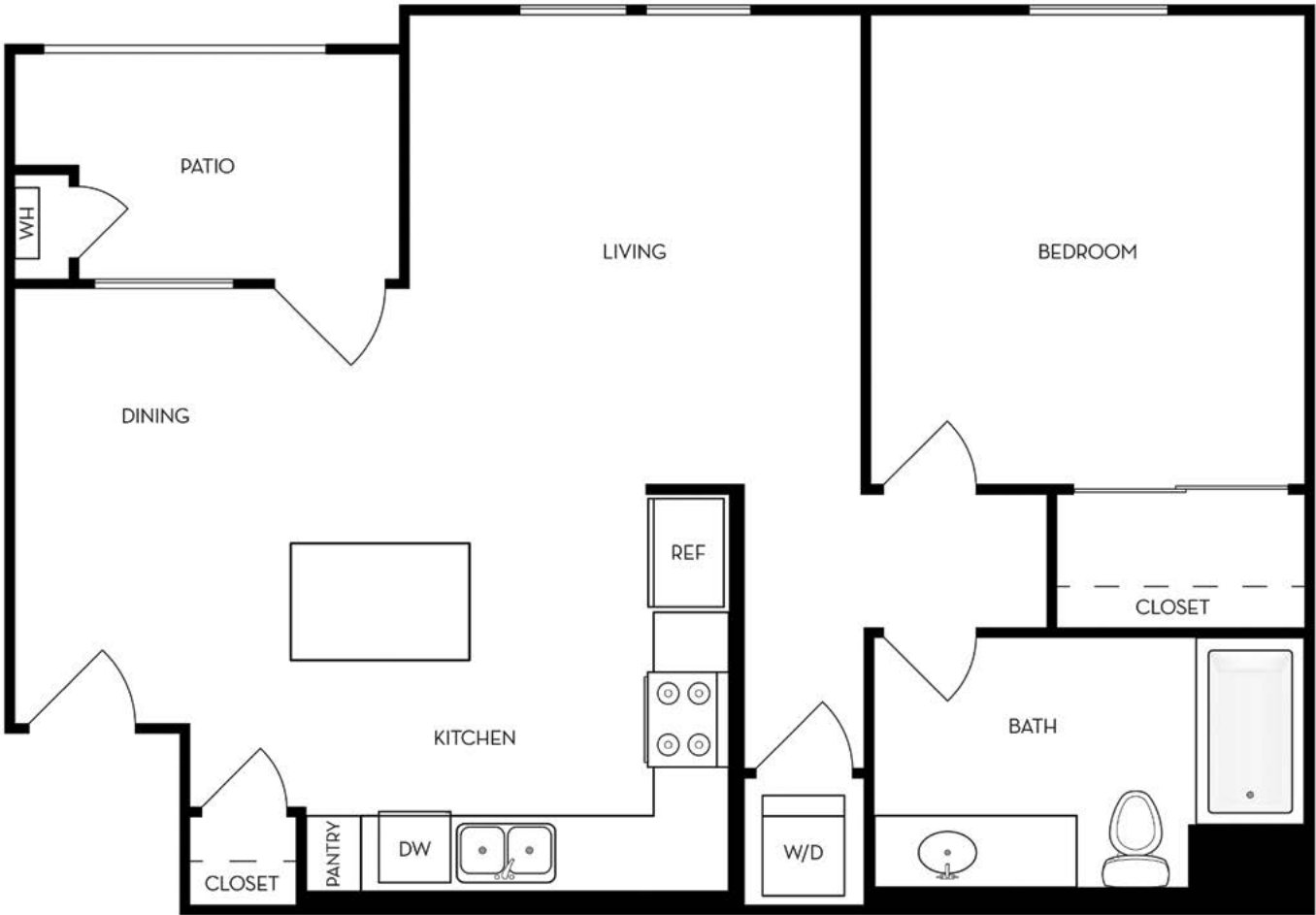
1-bedroom floor plan



A1

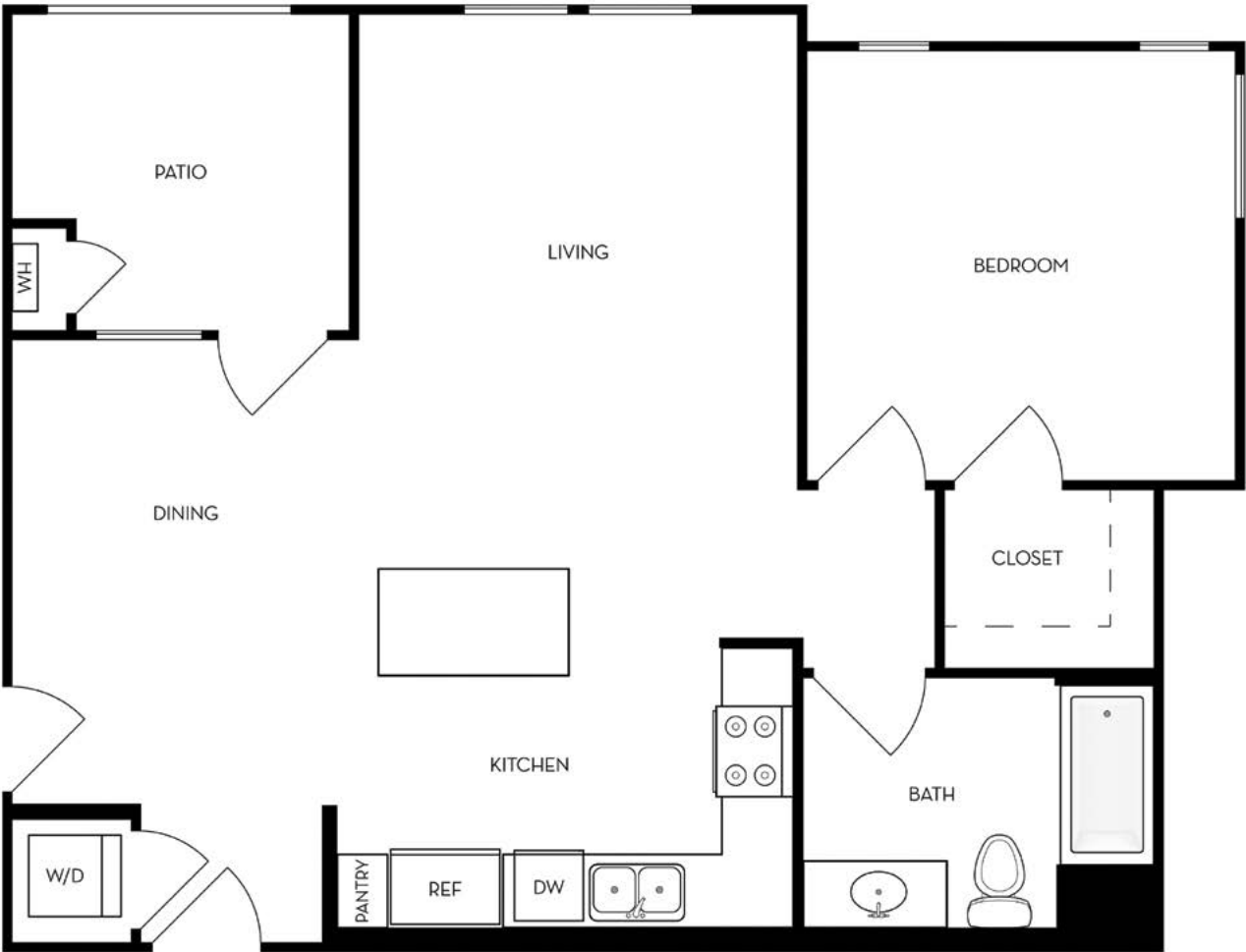
1-Bedroom | 1-Bath
Approx. 695 sq. ft.

1-bedroom floor plans



A2

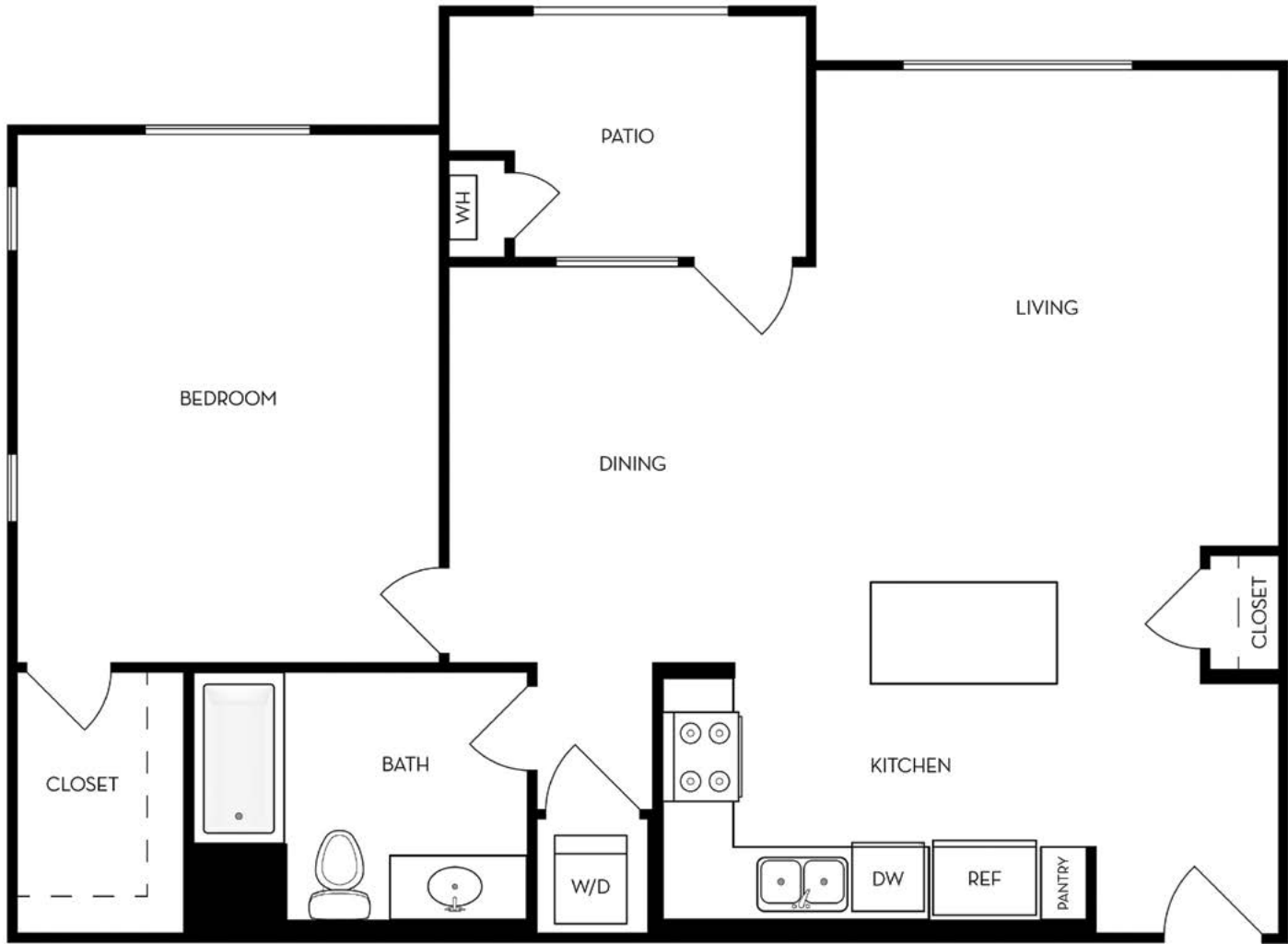
1-Bedroom | 1-Bath
Approx. 763 sq. ft.



A3

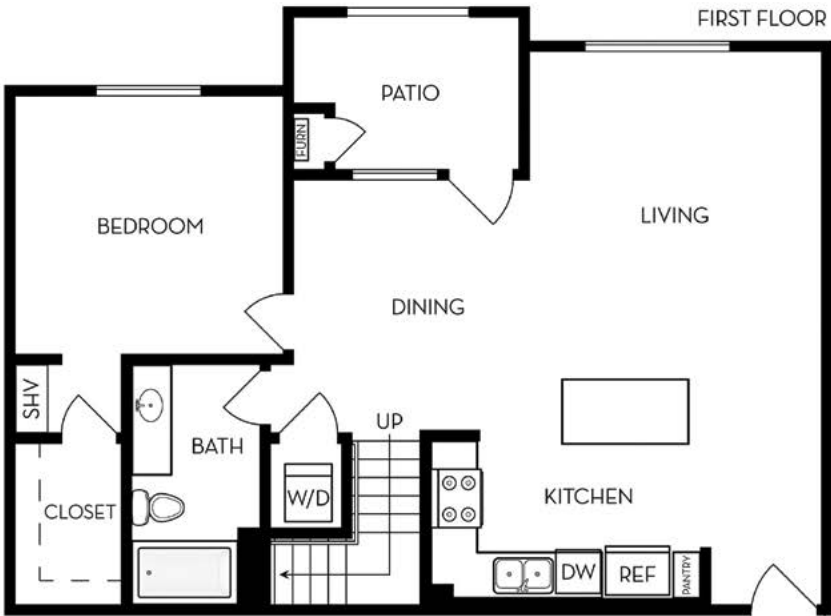
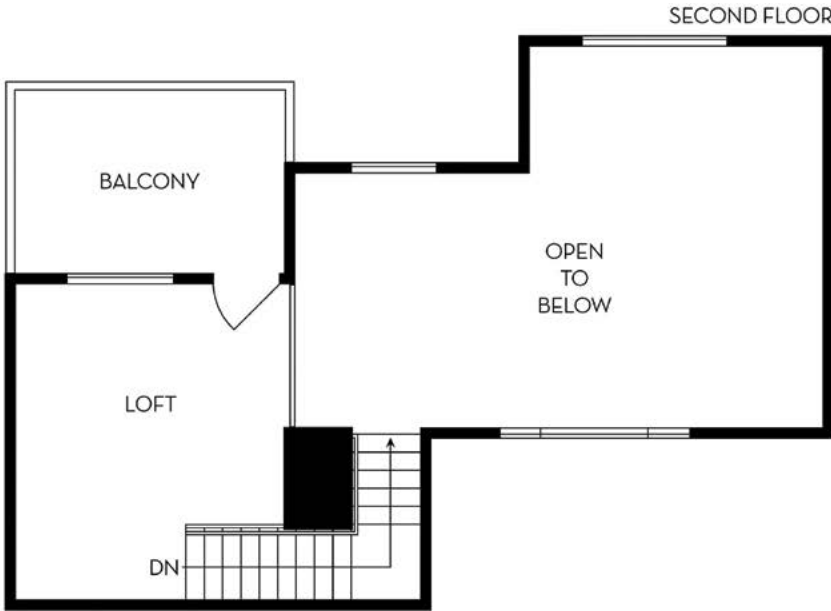
1-Bedroom | 1-Bath
Approx. 765 sq. ft.

1-bedroom floor plans



A4

1-Bedroom | 1-Bath
Approx. 875 sq. ft.



A5 - Loft

1-Bedroom | 1-Bath
Approx. 1,058 sq. ft.

2-bedroom floor plans



B1

2-Bedroom | 2-Bath
Approx. 1,000 sq. ft.



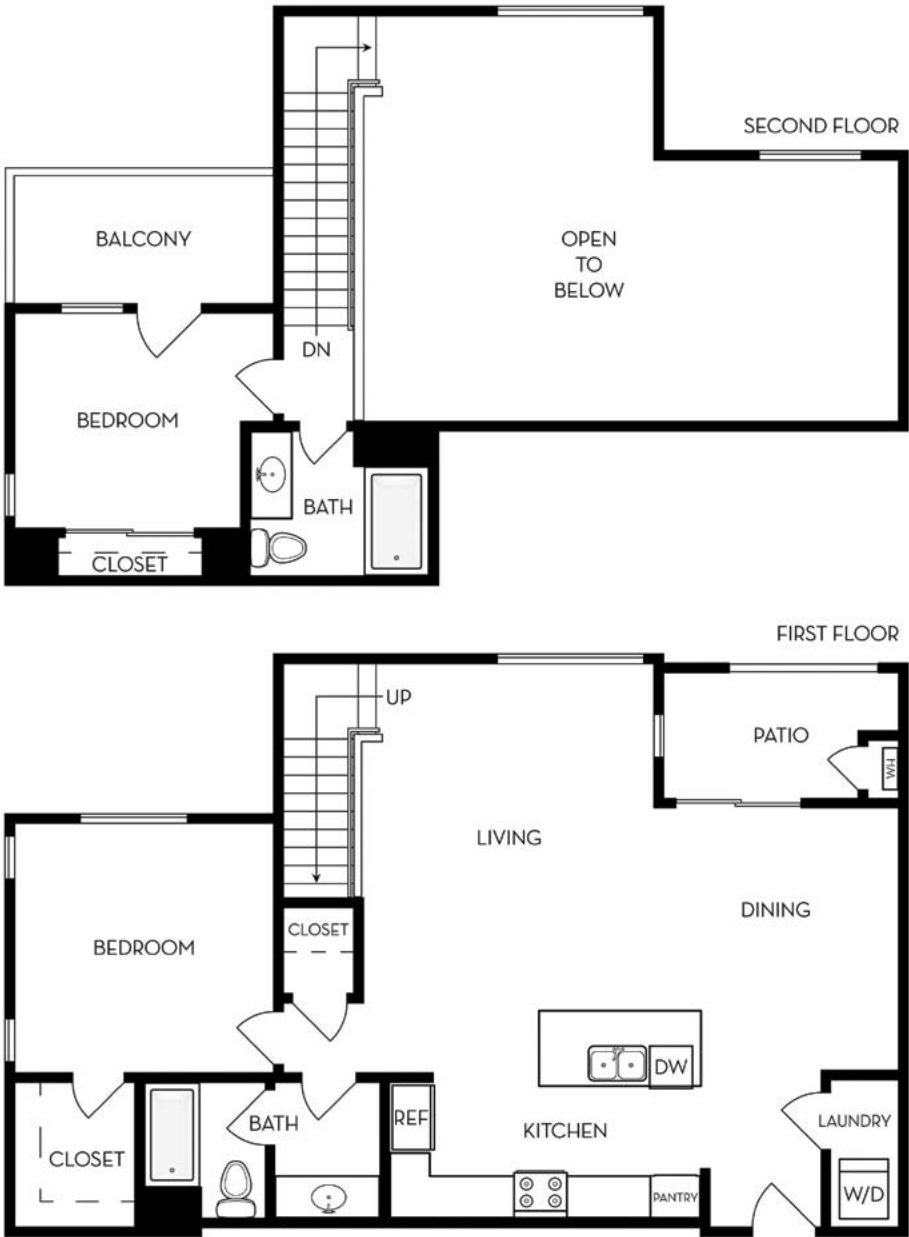
B2

2-Bedroom | 2-Bath
Approx. 1,003 sq. ft.

2-bedroom floor plans



B3
2-Bedroom | 2-Bath
Approx. 1,089 sq. ft.



B4 - Loft
2-Bedroom | 2-Bath
Approx. 1,120 sq. ft.

3-bedroom floor plans



C1

3-Bedroom | 2-Bath
Approx. 1,252 sq. ft.



C2 - Loft

3-Bedroom | 3-Bath
Approx. 1,200 sq. ft.

home at last

apply now



275 E. Del Amo Blvd.
Carson, CA 90745

[EvolveSouthBay.com](https://www.EvolveSouthBay.com)
[#EvolveSouthBay](https://www.instagram.com/EvolveSouthBay)

