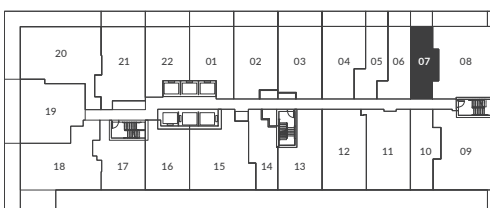
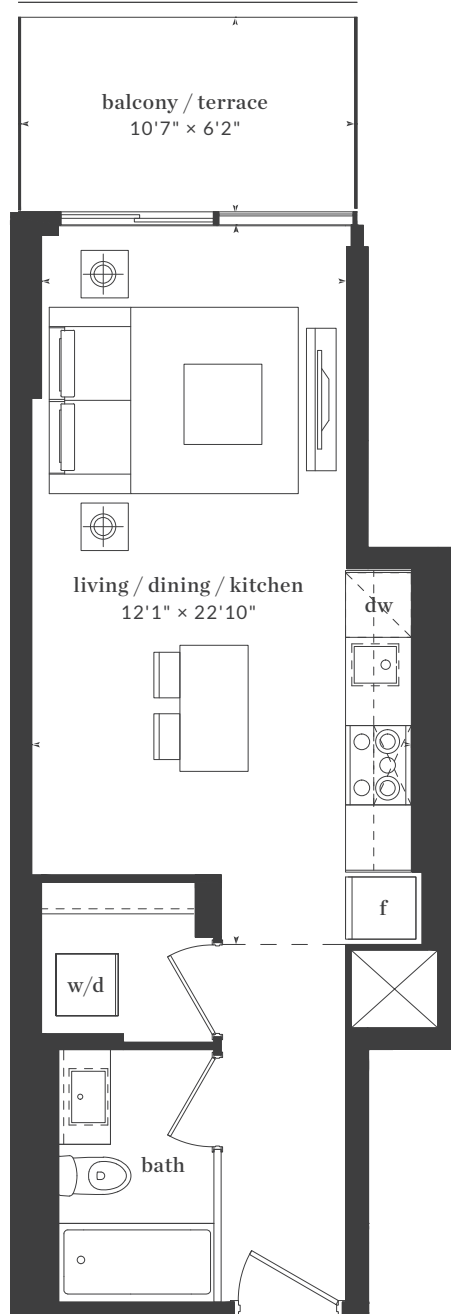


# THE LIVMORE

davisville

Studio  
Interior: 424 Sq. Ft.  
Exterior: 65 Sq. Ft.



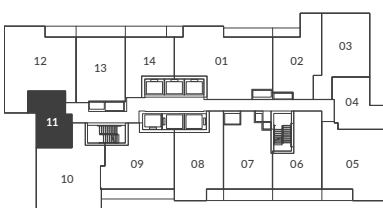
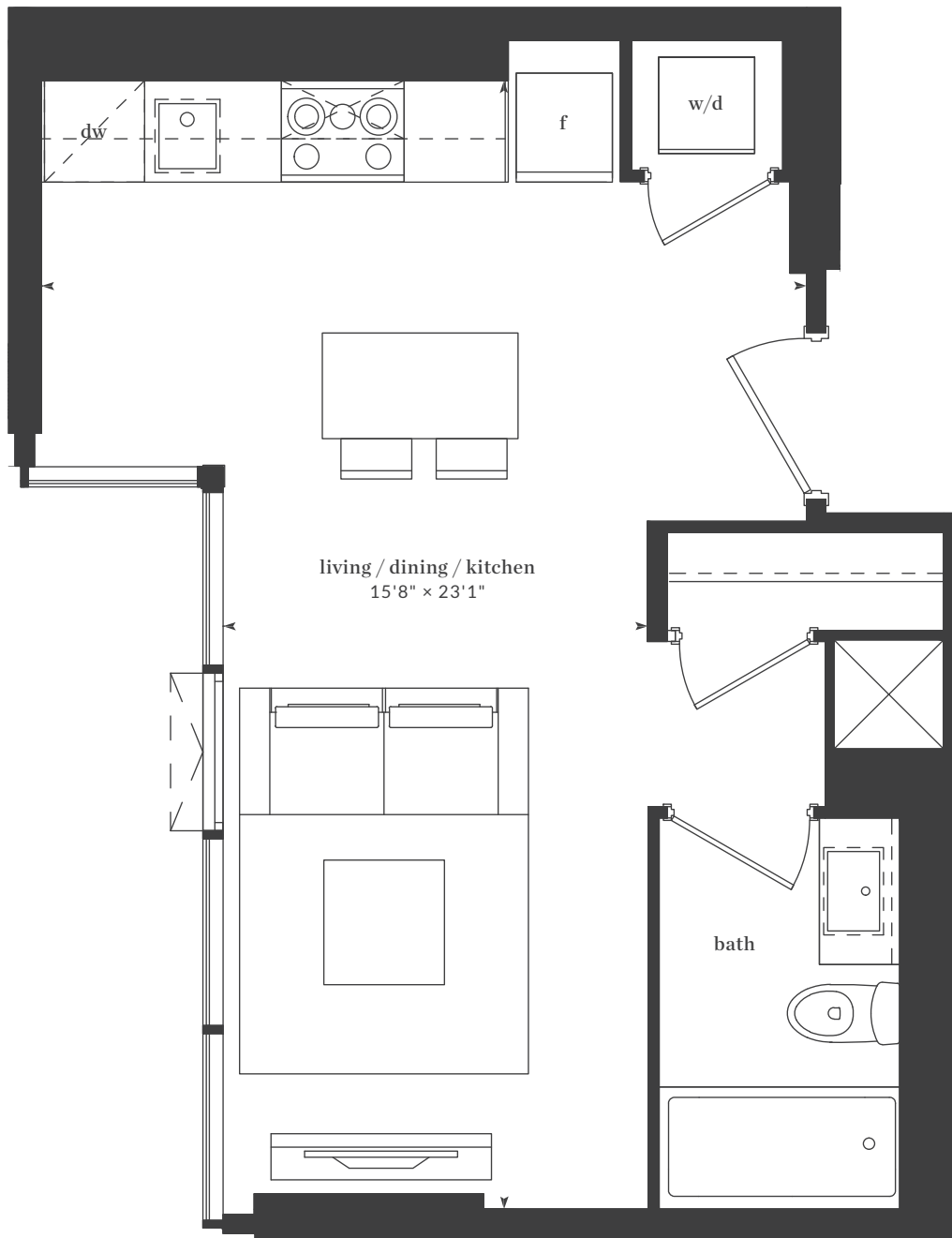
Level 3

All dimensions, areas, and drawings are approximate and are subject to change without notice. Actual dimensions may vary from the stated floor area.

# THE LIVMORE

st. patrick

Studio  
Interior: 388 Sq. Ft.



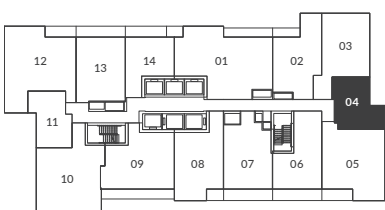
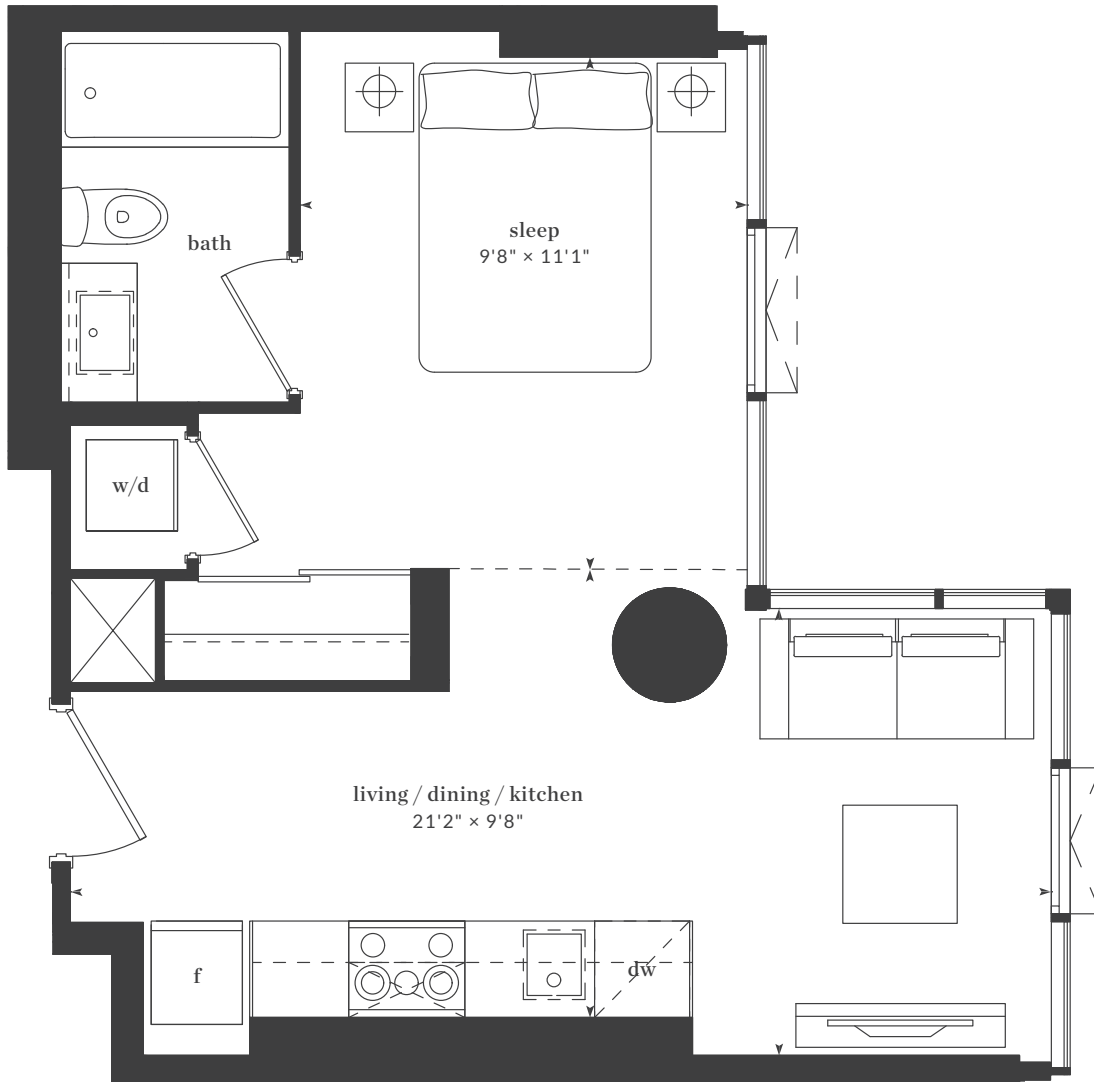
Levels 6 - 20

All dimensions, areas, and drawings are approximate and are subject to change without notice. Actual dimensions may vary from the stated floor area.

# THE LIVMORE

college

Studio  
Interior: 423 Sq. Ft.



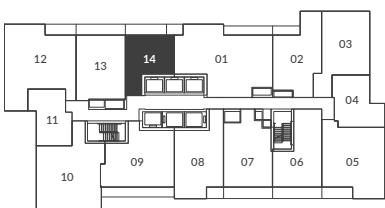
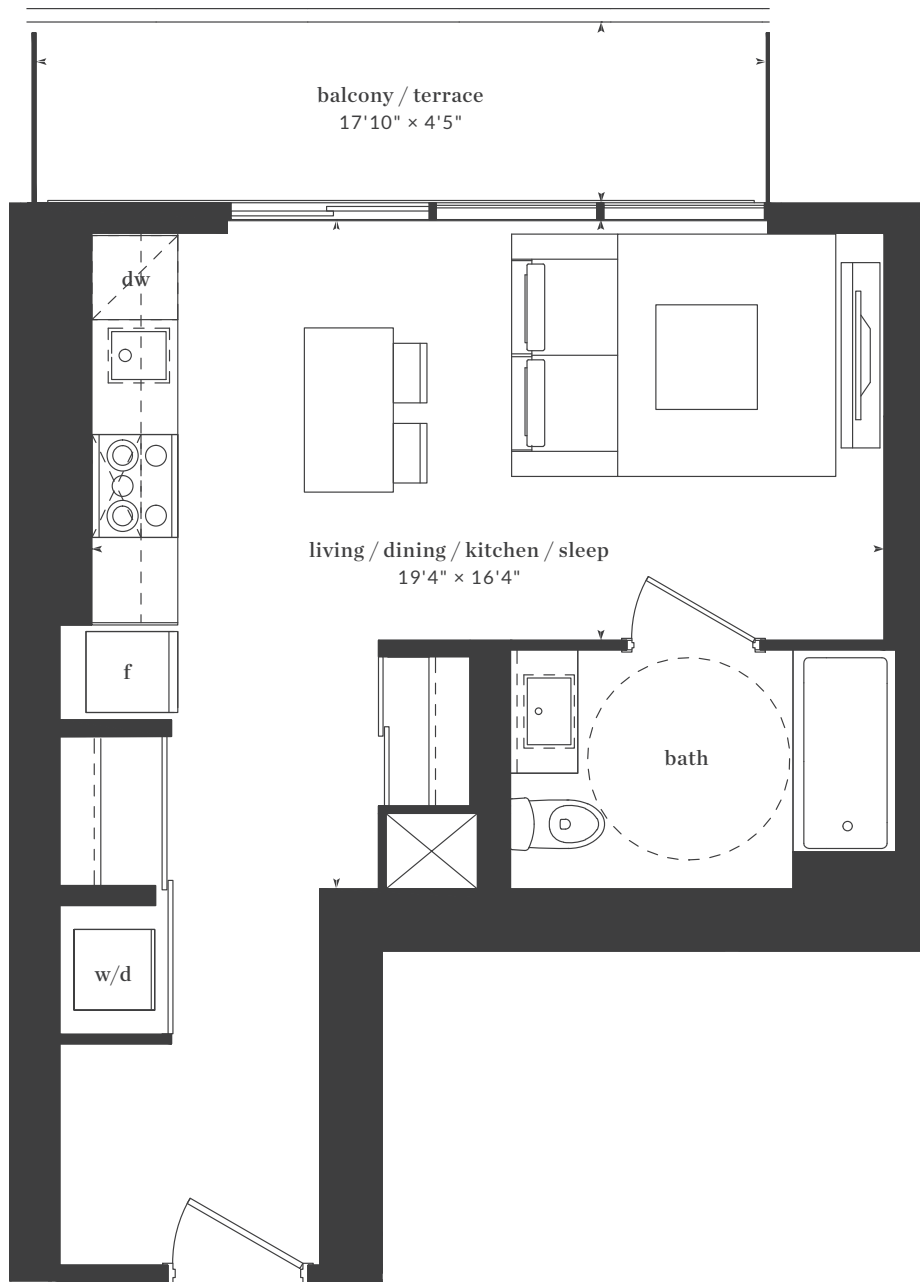
Levels 6 - 20 / 29 - 43

All dimensions, areas, and drawings are approximate and are subject to change without notice. Actual dimensions may vary from the stated floor area.

# THE LIVMORE

st. george

Studio  
Interior: 456 Sq. Ft.  
Exterior: 79 Sq. Ft.



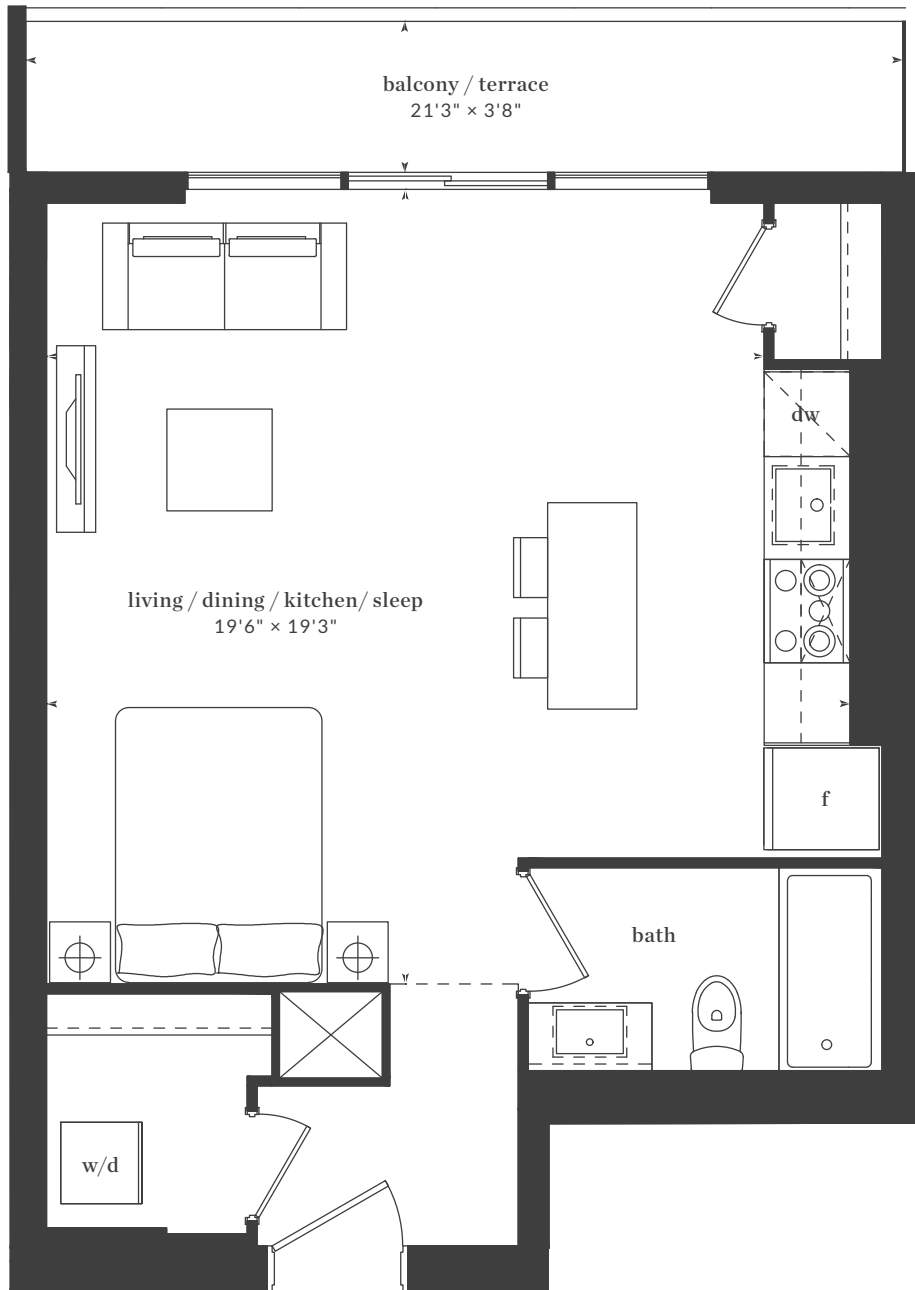
Levels 6 - 20 / 29 - 43

All dimensions, areas, and drawings are approximate and are subject to change without notice. Actual dimensions may vary from the stated floor area.

# THE LIVMORE

spadina

Studio  
Interior: 543 Sq. Ft.  
Exterior: 78 Sq. Ft.



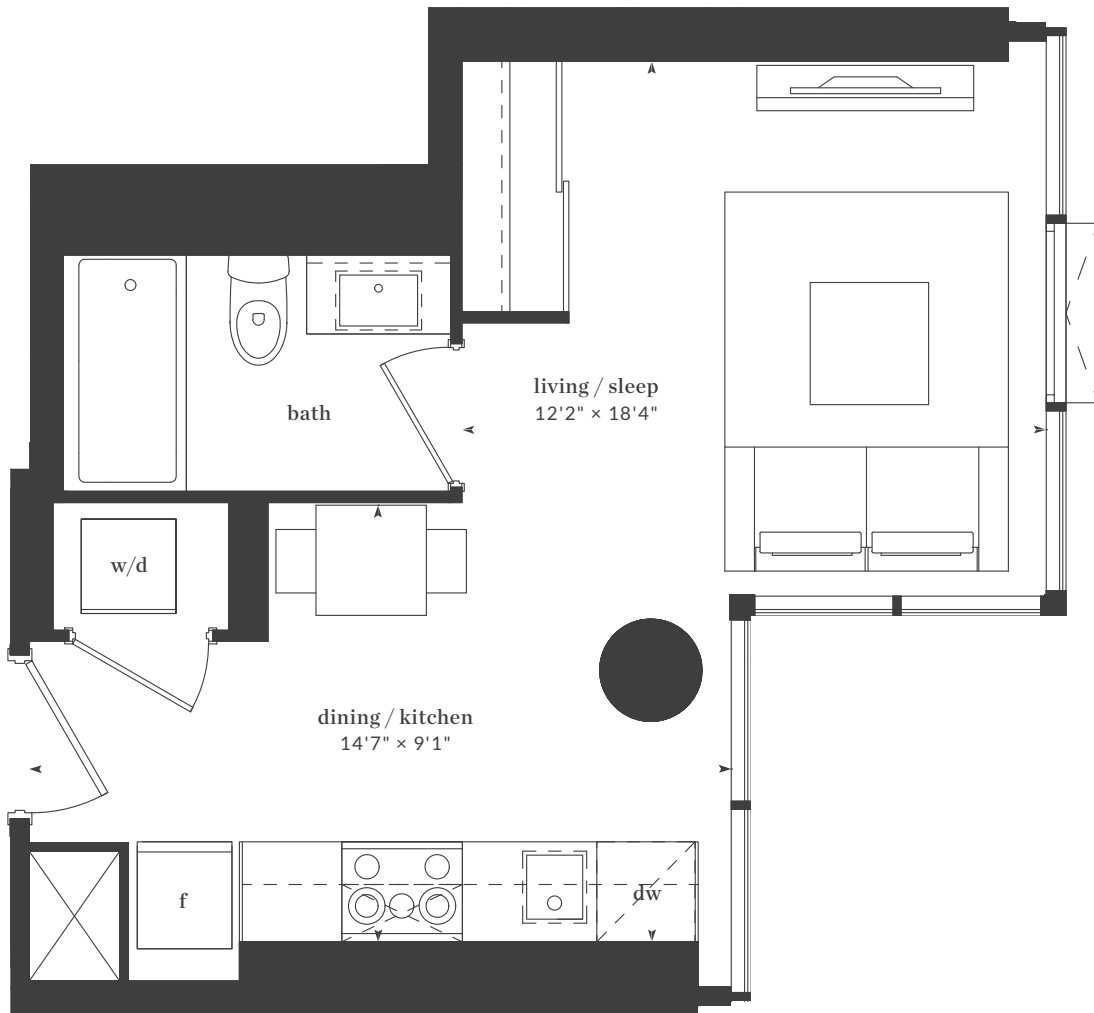
Level 21

All dimensions, areas, and drawings are approximate and are subject to change without notice. Actual dimensions may vary from the stated floor area.

# THE LIVMORE

high park

Studio  
Interior: 355 Sq. Ft.



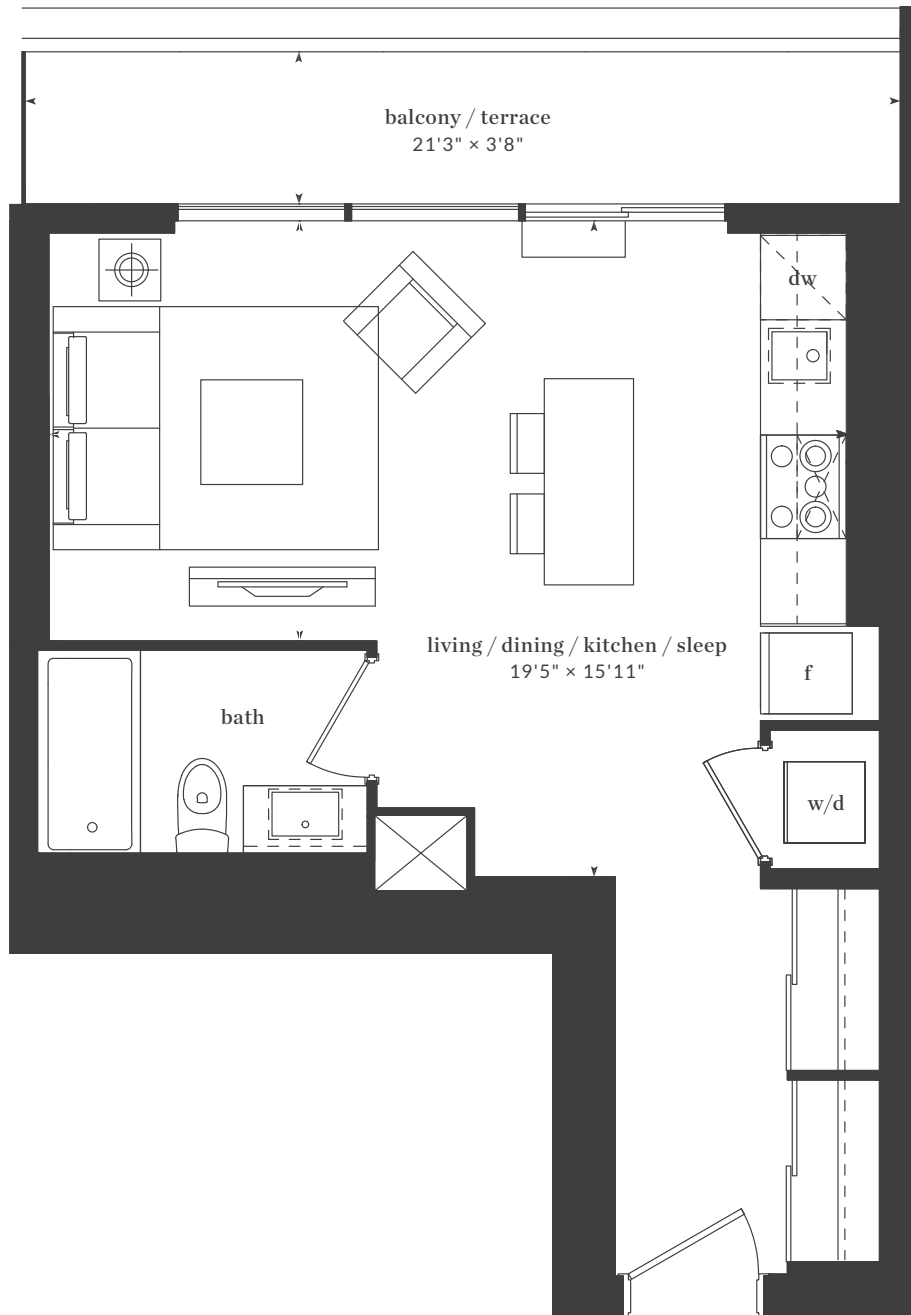
Levels 22 - 27

All dimensions, areas, and drawings are approximate and are subject to change without notice. Actual dimensions may vary from the stated floor area.

# THE LIVMORE

royal york

Studio  
Interior: 463 Sq. Ft.  
Exterior: 78 Sq. Ft.



Levels 22 - 27

All dimensions, areas, and drawings are approximate and are subject to change without notice. Actual dimensions may vary from the stated floor area.