



CENTERRA POINTE

AMAZING NEW APARTMENT HOMES



FEATURED AMENITIES

- » Beautifully landscaped 18+ acre community
- » Fitness center with aerobic and strength training equipment
- » Heated pool with screened lounge and deck
- » Refined architectural styling
- » Private attached garage
- » State-of-the art fiber optics for Internet and Cable TV
- » Professional on-site management

HIGH END FINISHES

- » Stylish granite countertops in kitchen and bathrooms
- » Premium planked flooring
- » Distinctive wood cabinets with stainless steel hardware
- » Energy-efficient furnace and air conditioning system
- » Energy Star rated stainless steel appliances
- » Extensive sound-insulation for increased privacy
- » Full-size washer and dryer
- » Energy-saving lighting package
- » Spacious walk-in closets in all bedrooms
- » Large 42" x 48" stall showers with separate soaking tub
- » Open floor plan with island kitchen
- » Private balcony or patio
- » Superior trim package including cove molding
- » Track lighting in kitchen and living area



ANN ARBOR'S NEW STANDARD FOR LUXURY RENTAL LIVING WITH PREMIUM FINISHES, ATTACHED GARAGES, CLUB-LEVEL AMENITIES AND A DYNAMIC LOCATION

LIVE HERE, LIVE BETTER

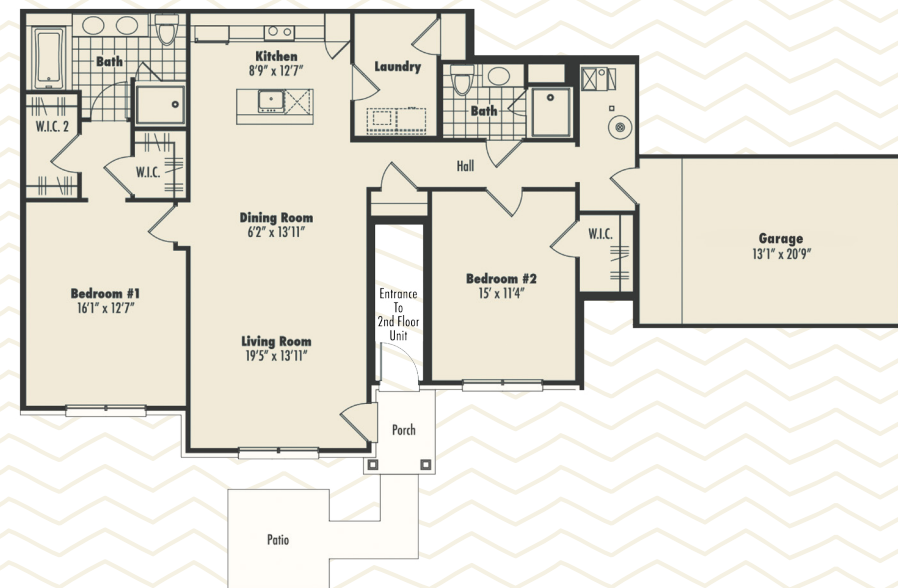
Each bedroom offers a full bath complete with undermount sinks, granite countertops, custom wood vanities, and a large tiled shower. Kitchens are equipped with premium appliances and attractive maple cabinets with an 8-foot high pantry for storage.

PRIVACY & CONVENIENCE

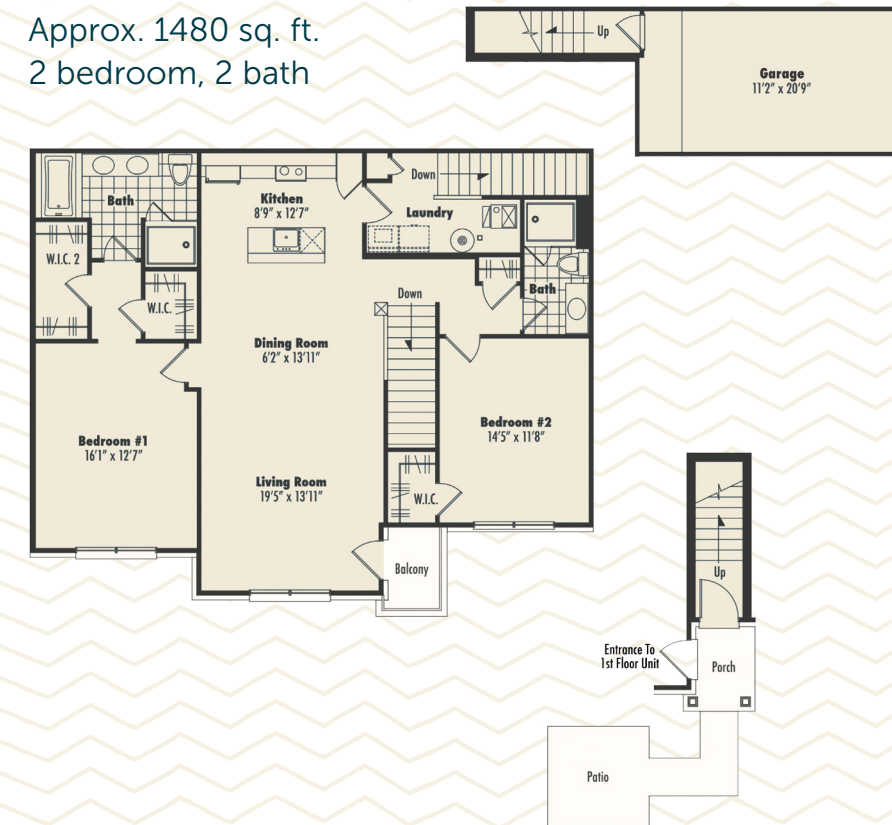
Enter your home from your attached garage or private front entry into a large open floor plan. The spacious great room, 9-foot ceilings, and planked flooring allow for relaxed living combined with a comfortable space for entertaining.

FLOOR PLAN OPTIONS

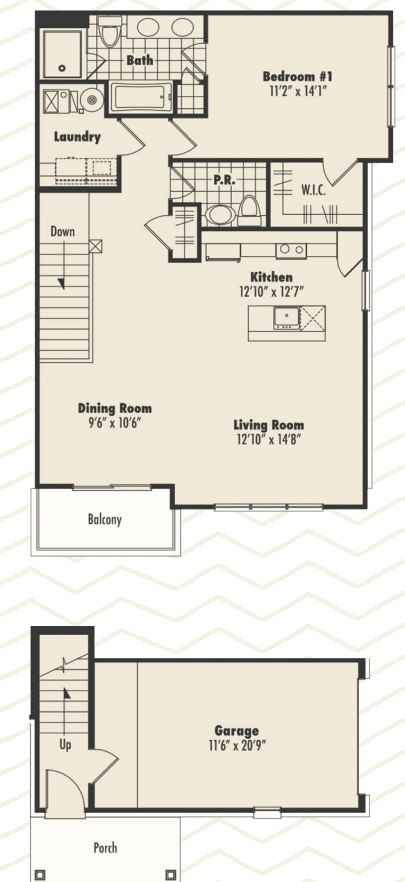
First Floor
Approx. 1405 sq. ft.
2 bedrooms, 2 baths



Second Floor
Approx. 1480 sq. ft.
2 bedroom, 2 bath

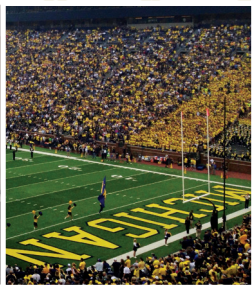
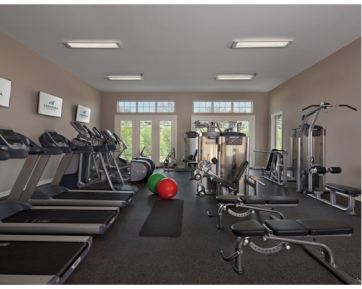


Second Floor
Approx. 1060 sq. ft.
1 bedroom, 1 1/2 bath



FIND THE PERFECT PLACE TO CALL HOME AT CENTERRA POINTE. CHOOSE FROM ELEGANT, SPACIOUS 1 AND 2 BEDROOM DESIGNS.

*Total square footage excludes patio, balcony & garage



CENTERRA
POINTE

2555 OAK VALLEY DRIVE, ANN ARBOR, MI 48103

CenterraPointe.com » (734) 668-7900



EQUAL HOUSING OPPORTUNITY