

Apartment Features

- Private entry
- Large entry foyer
- Vaulted ceiling*
- Woodburning fireplace*
- Built-in bookcases*
- Open bar area between kitchen and dining room
- Quality wall-to-wall carpet
- Mini-blinds
- Private covered deck/patio
- Washer/dryer connections
- Water views*
- Additional storage*
- Carports with storage units*
- Cable TV connections
- Internet access

Energy-Saving Features

- Double paned and sealed windows
- Double paned sliding glass door

Safety Features

- Smoke detector
- Dead bolt lock

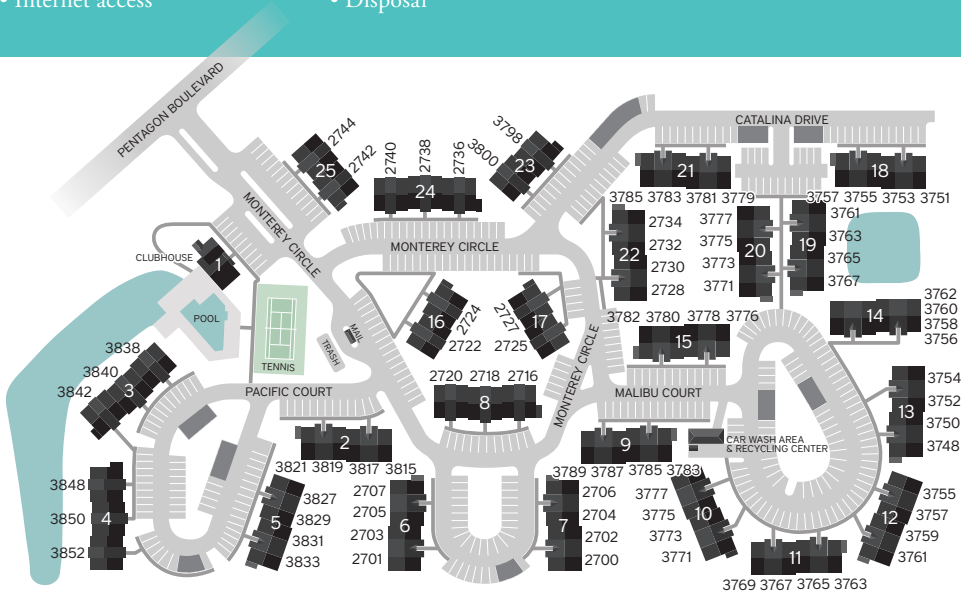
Designer Kitchens

- European "design" cabinets
- Self-cleaning oven
- Built-in microwaves
- No-frost refrigerator
- Dishwasher
- Disposal

Amenities

- Private clubhouse
- Pub
- Large screen TV
- Party room
- Fitness center
- Laundry center
- Lakeside pool
- Jacuzzi
- Lighted tennis court
- Car-washing area
- Recycling center

*some



Directions

I-675 to Col. Glenn Highway Exit - (WPAFB). Left off exit to traffic light at Grange Hall Road. Right on Grange Hall Road, cross over I-675 then left on Pentagon Boulevard.

Call 937 429 7177 // EnclaveAptHomes.com
2743 Monterey Circle // Beaver Creek, OH 45431
A Great Place to Live by Towne Properties®



Come home to The Enclave

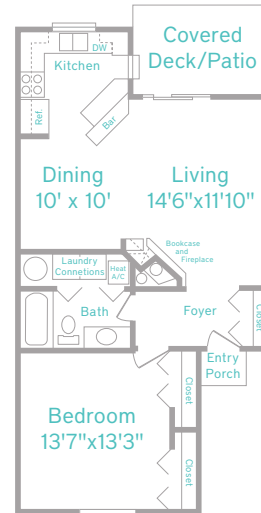
A contemporary apartment community developed by Towne Properties tucked among sparkling ponds, raised berms and pine trees. The stone and cedar buildings complement the natural surroundings and feature one and two-bedroom garden apartments with a difference. The interior features spacious rooms with wall-length closets, mini-blinds and efficient decorator kitchens. In addition, some apartments offer vaulted ceilings and woodburning fireplaces.



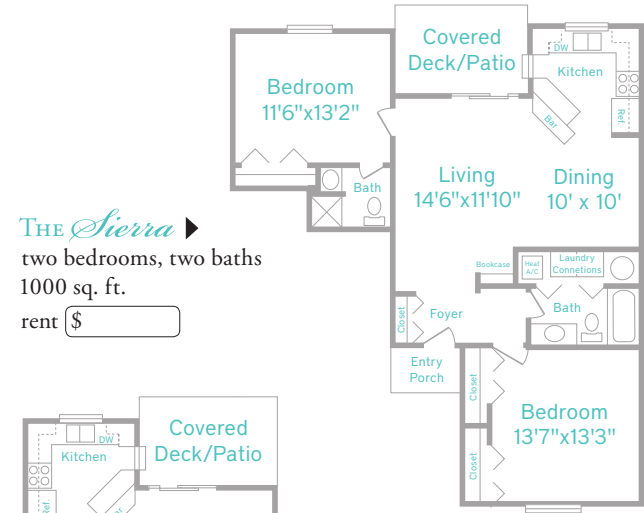
The Enclave clubhouse is the heart of the community with its cathedral ceiling, fireplace, pub and fitness center. The clubhouse deck overlooks the unique lakeside pool area with Jacuzzi and the adjacent tennis court.

Located in Beavercreek, minutes from Interstate 675, downtown Dayton, Wright State University, Fairfield Commons Mall and Wright Patterson Air Force Base—The Enclave is situated perfectly for convenience and privacy.

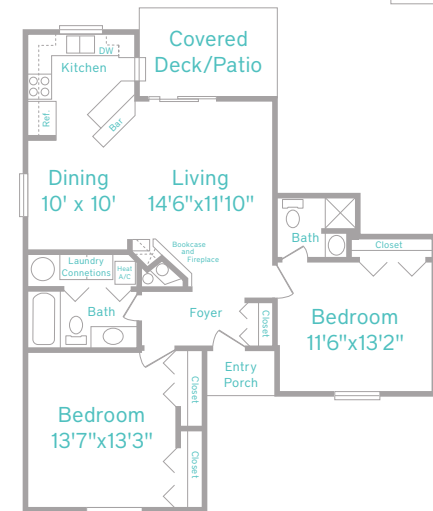
Towne's management team with its 24-hour emergency maintenance policy adds even more distinction to The Enclave and provides the best reason why it is *A Great Place to Live*®.



THE Granada ▲
one bedroom, one bath
750 sq. ft.
rent \$



THE Sierra ▶
two bedrooms, two baths
1000 sq. ft.
rent \$



THE Sunset ▶
two bedrooms, two baths
1000 sq. ft.
rent \$