

Professionally Managed by Towne Properties



DIRECTIONS From I-275 take exit 57 for OH-28 toward Blanchester/Milford. Head east onto OH-28. Turn left to stay on OH-28 then turn right onto Commons Drive.

Call 513 831 8899 | MillcroftApts.com
10 Commons Drive | Milford, OH 45150



We're Back! Come See What's New!



The All New
MILLCROFT
APARTMENTS & TOWNHOMES

CARE FREE LIVING AT ITS BEST

Change is in the air at Millcroft Apartments and Townhomes! The upgrades and renovations at this superbly located community makes it THE place to live in Milford. New interiors and exteriors are

.....
JUST STEPS AWAY FROM SHOPPING, RESTAURANTS AND RECREATION

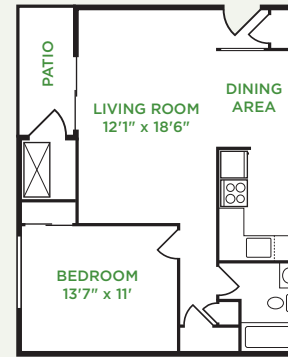
sheltered by wonderful mature trees. You will love

the bright new kitchens and the new flooring throughout. All this within walking distance of shopping and dining. Come visit the all new Millcroft Apartments and Townhomes today!

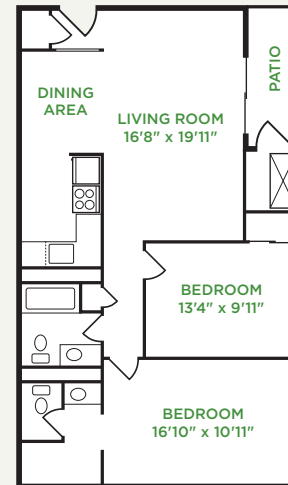
features

- kitchens with new appliances & cabinets
- updated flooring throughout
- laundry centers with new washers & dryers
- renovated common areas
- freshly black-topped lots
- new decks*
- new roofs & siding
- pet friendly
- water & trash paid
- refurbished tennis courts, basketball courts and swimming pool
- brand new fitness center
- newly decorated clubhouse

*townhomes only



1



2

1 The Ash
1 BR / 1 Bath, 650^{sqft}

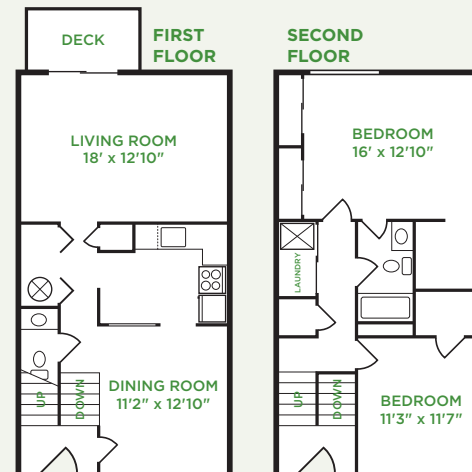
\$

2 The Maple
2 BR / 1.5 Bath, 900^{sqft}

\$

3 The Oak
2 BR / 1.5 Bath, 1200^{sqft}

\$



3