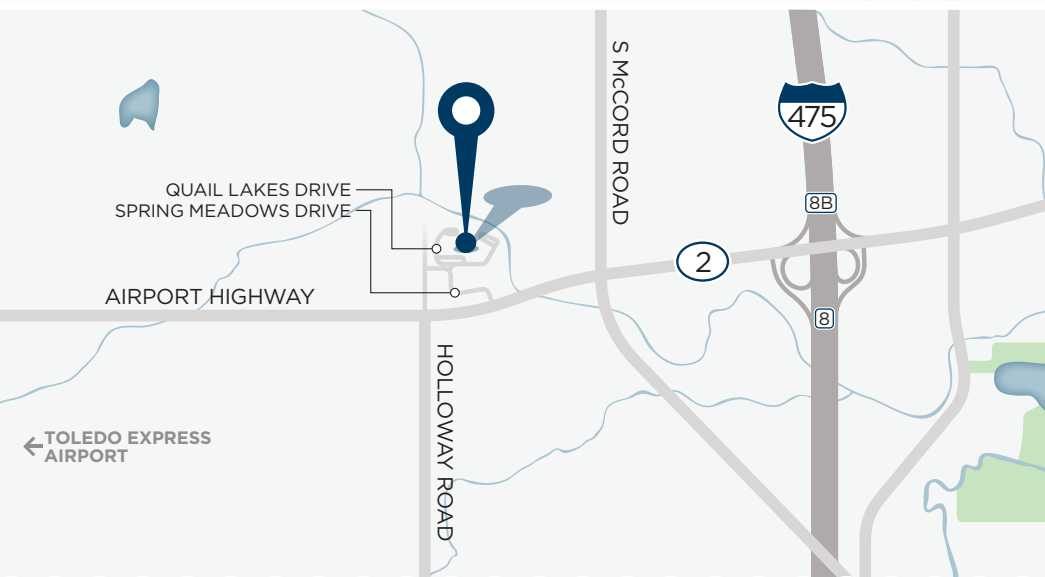




## QUAIL HOLLOW AT THE LAKES

*Luxury Apartment Homes*



From I-475 take exit 8 to merge onto OH-2 W/Airport Hwy toward Swanton and head west on Airport Highway. Turn right onto Spring Meadows Drive then right onto Quail Lakes Drive.



419 866 4800  
[QuailHollowAtTheLakesApts.com](http://QuailHollowAtTheLakesApts.com)  
 7000 Quail Lakes Drive  
 Holland, OH 43528

Professionally Managed by Towne Properties



• *Quail Hollow at the Lakes* •

# LIVE LIFE BETTER



Quail Hollow at the Lakes is surrounded by dramatic water views and picturesque wooded vistas that are sure to take your breath away. Come sit poolside or relax at our bubbling hot spa. Our large community and exercise facility is to be enjoyed by all of our residents. We are conveniently located near schools, shopping, dining, banks and grocery stores and offer spacious floor plans featuring 1, 2 and 3 bedrooms with

washer/dryer connections. Don't pass on this opportunity to live at a place you can always call home. Please call for an appointment today.

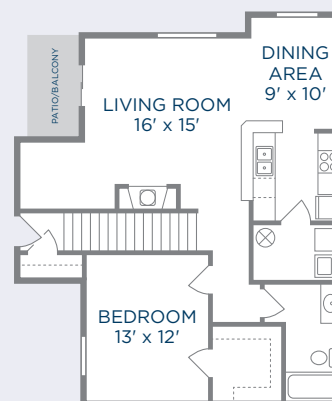
## INTERIOR AMENITIES

- island kitchens • dishwashers • garbage disposals • built-in microwave ovens
- 18-cu. ft. frost free refrigerators with icemakers • gas fireplaces (select units)
  - central air conditioning • full size washer and gas dryer connections
- ceiling fans in master bedroom and dining room • spacious walk-in closets
- lofty nine foot ceilings (some with vaulted ceilings) • private balconies or patios
  - telephone lines prewired for computers and modems
  - individually metered for gas, electric and water service

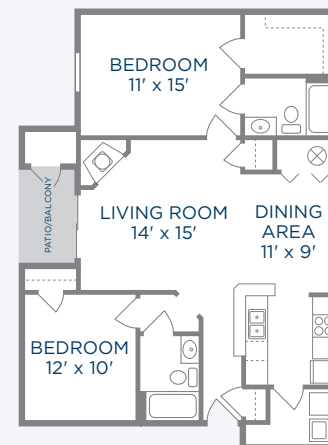
## COMMUNITY AMENITIES

- bark park • pet friendly • private entrances • carports available • swimming pool/whirlpool spa
- sand volleyball court • efficient gas heat and hot water • 24-hour fitness center
- 24-hour emergency maintenance • Springfield Township and Springfield Schools

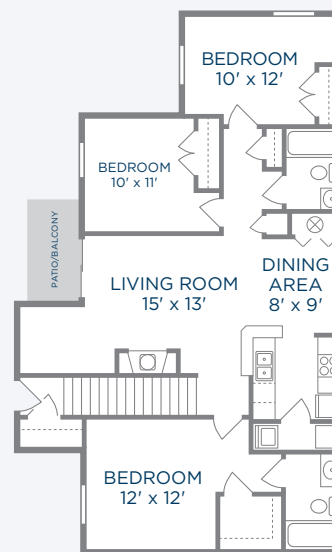
## FLOORPLANS



01



02



03

01 **THE QUAIL**  
one bedroom, one bath  
first floor: 875 sq ft  
second floor: 960 sq ft

\$

02 **THE MALLARD**  
two bedroom, two bath  
1068 sq ft

\$

03 **THE WATERFORD**  
three bedroom, two bath  
first floor: 1183 sq ft  
second floor: 1281 sq ft

\$