

## BEST PRACTICES : CARDBOARD & MIXED PAPER STAGING & BUNDLING

Welcome to smarter recycling! We work with you to determine the optimal staging set-up for your business and ensure you have all the equipment needed to fine-tune a successful recycling program.

**It all starts with the carts ... Your new set-up will help keep your materials clean!**  
Keep reading for some best practices to help you retain the value of your cardboard.



**BEFORE**



**WITH ROADRUNNER**

- ✗ No waxy cardboard.
- ✗ No attached materials, like Styrofoam, foil, plastic
- ✗ No food contamination (food/trash/other).
- ✓ Cut unusually shaped boxes down to uniform size. A boxcutter is very useful here.
- ✓ Boxes must be flattened and stacked like pancakes.
- ✓ Mixed Paper should be in clear plastic bags.

### BUNDLES, NOT BOXES



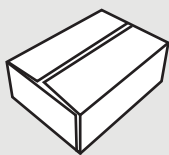
Break down and flatten all boxes to optimize size.

### KEEP THE CARDBOARD CLEAN

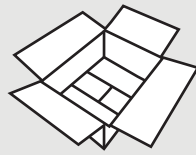


Even a single contaminated box can send an entire bale to landfill.

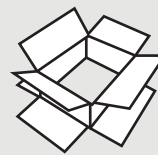
### BEST PRACTICES FOR BOX BREAKDOWN :



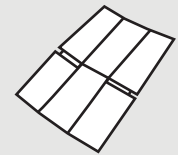
Take your box and turn it upside down. Run a box cutter along the center bottom, slicing through the packing tape.



Repeat this under the two flaps on each end of the box, freeing the tape at the edges.



Pull all four flaps straight up, so that all edges on either end move freely up and down.



Lightly push and twist in until the box collapses on itself, now flattened and ready to be stacked!



# Recyclable Items



**Metal (Clean):** Aluminum cans, clean foil and foil containers, tin cans, small scrap metal



**Newspapers, phone books, magazines, paper, egg cartons, junk mail, cereal boxes, construction paper, paperbacks**



**Plastic containers with recycling symbols #1-7**



**Clean cardboard**

**YES** 

- **PAPER:** Newspapers, magazines, junk mail, cereal, cracker and shoe boxes, catalogs, paper bags, egg cartons, envelopes, phone books, computer paper, construction paper and paperbacks
- **CARDBOARD**
- **METAL:** Aluminum and tin cans, clean foil, small scrap metal
- **PLASTIC:** Containers with recycling symbols #1 - #7

**NOTE:** Please do not put e-waste in trash or recycling containers including cell phones, computers and televisions.



**NO** 

- Plastic bags
- Styrofoam
- Batteries
- Energy efficient bulbs  
Fluorescent bulbs  
and tubes
- Liquids and food waste
- Food contaminated paper plates, cups, napkins, paper towels and tissues
- Plastic forks, spoons and straws
- Candy wrappers



# Los Materials Reciclables

Los artículos que ahora se pueden reciclar incluyen:

- Aluminio: latas, papel y recipientes limpios
- Cartón corrugado
- Latas de pintura al látex vacías y secas
- Cartones de leche, soya y jugo
- Periódicos
- Papel: bolsas (todos los colores) catálogos, cartón fino (cajas de cereal y de zapatos), papel de computadora, cartulina, cajas para huevos, sobres, correo basura, revistas, guías telefónicas, papel blanco
- Plástico: botellas, botijas y frascos con los símbolos de reciclaje  a 
- Aparatos electrodomésticos pequeños (tostadoras, rizadores de cabello)\*
- Chatarra pequeña
- Latas de hojalata y de acero

\* No incluye televisores, monitores de computadora ni computadoras portátiles





**Steel, Tin & Aluminum Cans**



**Plastic Bottles & Containers #1-5, 7**



**Paper**



**Paper Cardboard, Dairy & Juice Containers**



**Flattened Cardboard & Paperboard**



**Glass Bottles & Jars**



**DO NOT INCLUDE:** Food waste, plastic bags, or polystyrene foam cups & containers.

**Single Stream Recycling**



A cluster of small squares in shades of yellow, light blue, and orange, scattered in the top-left corner of the page.

# ROADRUNNER™

## ULTIMATE GUIDE TO OUR CLEAN STREAM RECYCLING METHOD

### WHO IS THIS FOR?

Anyone seeking a better understanding of how the current waste industry is failing, and how our clean stream method is helping businesses recycle more.

# SINGLE STREAM VS. CLEAN STREAM

## A LOOK INSIDE WHY SINGLE STREAM RECYCLING ISN'T WORKING

Single stream recycling refers to the standard method of recycling in which all materials (paper, plastics, metals, glass and cardboard) are mixed together in one garbage bag or one dumpster. It *seems* like the easiest method... but what you might not know is that this method leads to low recycling rates and higher operational costs, due to issues that arise after your materials are picked up and taken to recycling sorting centers.

**We believe in a better way to recycle more, while also spending less.**

## SO, WHAT ARE THE ISSUES WITH SINGLE STREAM RECYCLING?



### ONE CONTAINER LEADS TO CONTAMINATION

From greasy cardboard boxes and jars with food residue, to shards of glass mixed in with paper, items that may seem recyclable can actually contaminate entire loads of valuable materials.



### LARGE PORTIONS STILL END UP IN LANDFILLS

Because of heavy contamination, inefficient sorting, and consumer error, only 20% of recycled materials are actually recycled.



### IT'S EXPENSIVE

Large, outdated hauling trucks, sorting centers, sorting machinery and inefficient hauling routes are costly, and require lots of upkeep and maintenance.

The nation's largest recyclers shuttered 21% of their single-stream recycling facilities in the last two years. There are fewer recycling facilities than ever to recycle collected materials.



### FACILITIES ARE DWINDLING



### PROCESSES ARE OUTDATED

City recycling programs are often combinations of many programs introduced at different periods across decades, resulting in diluted, ineffective systems. Communities and businesses don't know the correct or current processes.

# WHEN WE SAY WE RECYCLE, WE MEAN IT

## A VISUAL GUIDE TO ROADRUNNER'S METHOD

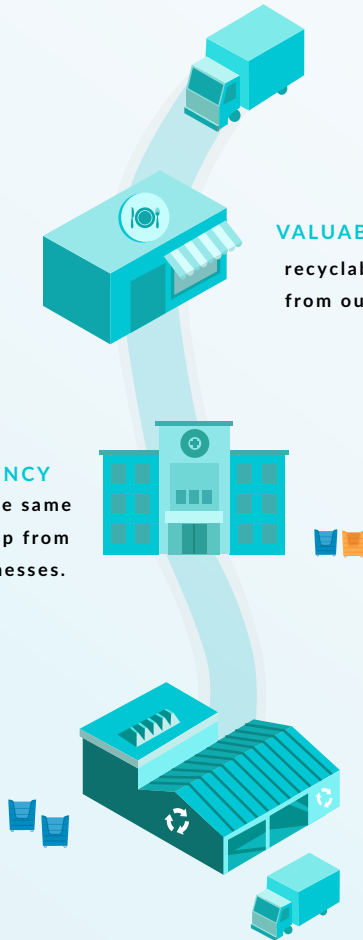
### THE ROADRUNNER WAY

RoadRunner starts with local haulers with schedule gaps, who drive smaller, more efficient vehicles.

### THE TRADITIONAL WAY

Traditional Haulers use large, expensive equipment that are expensive to run and repair.

**ROUTE EFFICIENCY** is created when the same driver also picks up from nearby local businesses.



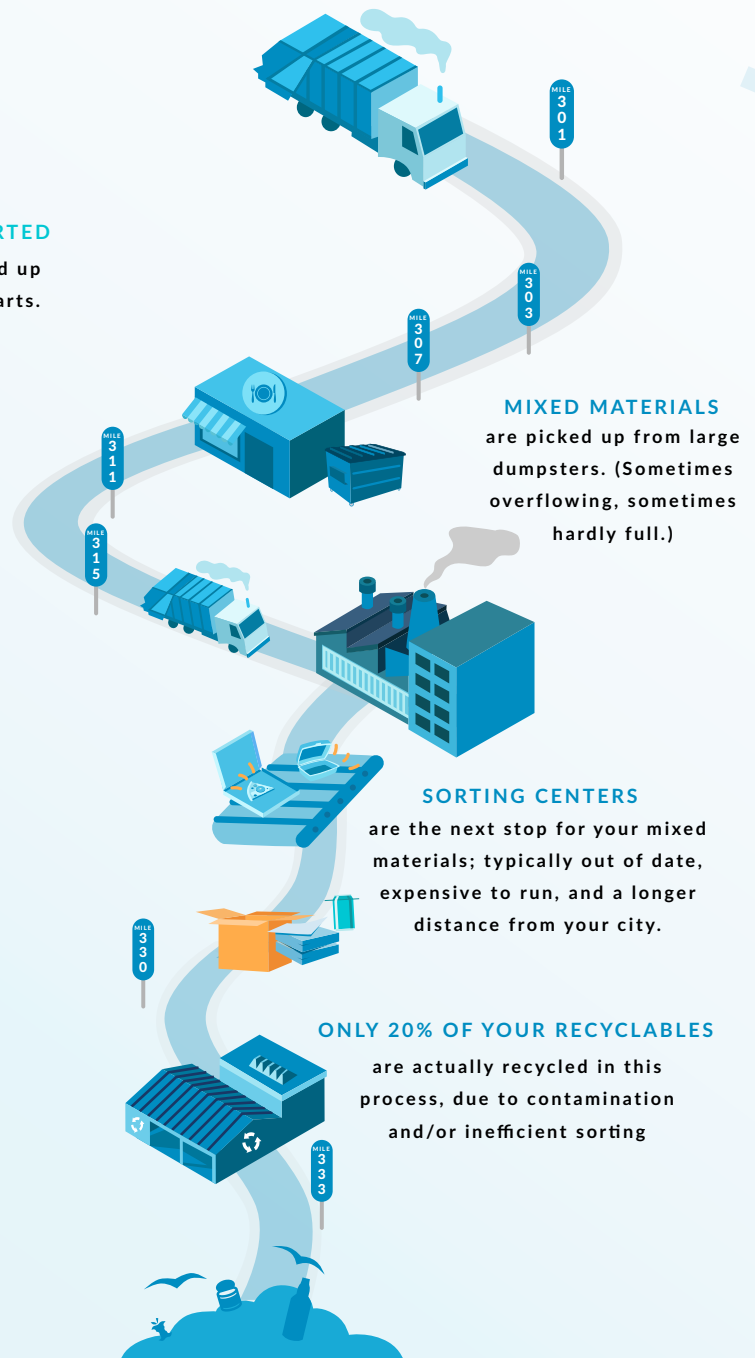
**VALUABLE, PRE-SORTED** recyclables are picked up from our FleetHaul carts.

### MATERIALS ARE DROPPED OFF DIRECTLY

at the nearest recycling center. Our process eliminates the need for sorting centers.

**99.9%**

of your valuable materials are efficiently recycled locally, benefiting you and your community.



**MIXED MATERIALS** are picked up from large dumpsters. (Sometimes overflowing, sometimes hardly full.)

### SORTING CENTERS

are the next stop for your mixed materials; typically out of date, expensive to run, and a longer distance from your city.

### ONLY 20% OF YOUR RECYCLABLES

are actually recycled in this process, due to contamination and/or inefficient sorting

### 80% OF YOUR RECYCLABLES

still end up in landfills, sometimes even resulting in profit for the traditional waste management companies.



# ROADRUNNER'S CLEAN STREAM SOLUTION

Recycling isn't truly effective if you just collect the materials; the collected materials must be able to be made into valuable products.

To improve recycling rates, we've developed the

## **CLEAN STREAM RECYCLING PROCESS,**

*in which materials are sorted by stream: Cardboard, Commingled (Glass, Aluminum, Plastic), Mixed Paper and Compost.*

Along with optimized equipment, our hauling process is cost-effective and efficient, eliminating the need for heavy, out-dated trucks. So, while single stream recycling may be the most simple process for the consumer, clean stream recycling results in higher recycling rates and increased savings!

**RECYCLE SMARTER WITH ROADRUNNER.**

info@roadrunnerwm.com | 888.871.7623 | roadrunnerwm.com



# ROADRUNNER™

## CARDBOARD RECYCLING



RoadRunner Recycling's unparalleled cardboard recycling services lower your recurring costs and massively improve recycling rates.

Dedicated Customer Service and Account Manager Representatives manage your waste operations from end-to-end, so you can focus on what's important to your business.

### CARDBOARD RECYCLING TIPS + FACTS:



#### **BREAK IT DOWN**

Don't pay for space the air occupies. Break down cardboard and use your space more efficiently, thus lowering pick-up frequency and saving on recurring costs.



#### **AVOID CONTAMINATION**

Cardboard contaminated with food waste, oils, or wet surfaces can contaminate the entire receptacle, costing you money.



#### **KEEP IT LOCAL**

Our services operate in dense pockets and utilize local fleet-based businesses and recycling facilities, supporting your local community.



#### **EVERYONE SAVES**

Working with us means saving on recurring costs. On average, our Cardboard Recycling customers save 23% every month!

