



PACIFICA
SENIOR LIVING

HILLSBOROUGH

ASSISTED LIVING • MEMORY CARE

It's a New Day.

And It's Yours!

The background of the entire page is a repeating pattern of stylized, overlapping leaves in various shades of light blue and lavender. The leaves are elongated and pointed, with some having small circular details at their bases.

Our Mission

Privately owned, Pacifica Senior Living strives to create a lifestyle of independence and peace of mind for each individual and their family. We do what we love and what we truly believe in – providing compassionate, personalized care services with dignity and respect. Our dedicated, professional team supports each resident and goes above and beyond to help them feel at home.



It's a New Day.

At Pacifica Senior Living, we don't expect our residents to "fit" into one of our communities. We've designed our communities to "fit" them – to meet their different needs, preferences, dreams and goals. From independent living to assisted living and memory care, our communities welcome residents to live by their own design.

Our communities provide residents with every service and amenity they need, want and *deserve* to live each day just as they choose. We respect their individuality and understand that each person is in charge of the direction his or her life takes. We're simply here to support them. Every step of the journey.

And It's Yours!

Senior *Living* Services

Pacifica Senior Living communities offer a variety of care and lifestyle choices to support our residents in living well.

Independent Living

Active seniors retire to carefree living at its best. No housework. No yardwork. *No worries.* Just time to spend as they choose. Our communities feature spacious apartment homes, amenities, services and engaging programs – all designed to provide residents with the lifestyle to which they've aspired.

Heartland™ Assisted Living

Delivering the optimal balance of independence and support, Heartland™ Assisted Living helps our residents live fulfilling, dignified lives. Each resident has a customized service plan that meets his or her individual needs. With support available 24 hours a day, our residents enjoy assistance with activities such as:

- Meals
- Medication Management
- Bathing & Dressing
- Mobility
- Transportation



Welcome

Welcome to Pacifica Senior Living Hillsborough, a beautifully appointed senior living community that elevates assisted living, memory care and respite care to a new standard of excellence.

Offering affordable fees for our Heartland™ Assisted Living and Legacies™ Memory Care programs, Pacifica Senior Living Hillsborough just may be the best value in luxury senior living in the Chino area. Rich with amenities and services, Pacifica Senior Living Hillsborough welcomes residents to enjoy a worry-free lifestyle that beautifully balances independence and support.

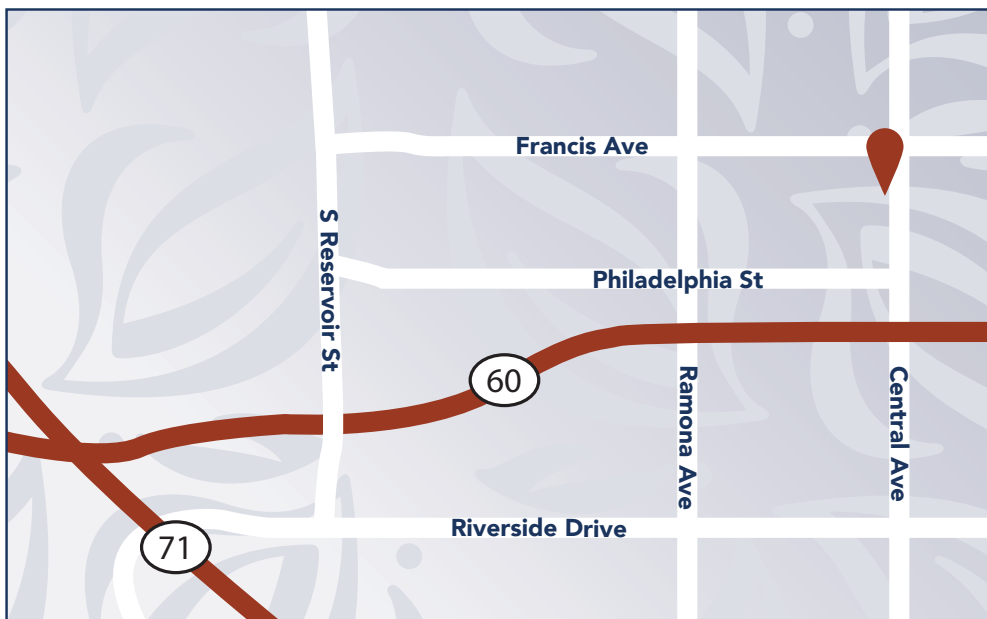
Our community has been thoughtfully created and designed to provide seniors with an enriching, fulfilling lifestyle, the company of peers and the peace of mind of 24-hour support by a trained staff.

From a variety of floor plan options to inviting spaces, both indoor and out with carefully monitored entrances and exits, Pacifica Senior Living Hillsborough offers residents the dignity of private apartments, as well as community areas in which to gather with friends and enjoy social interaction.

Conveniently located, Pacifica Senior Living Hillsborough is close to shopping, healthcare services, religious services and cultural and educational opportunities.

At Pacifica Senior Living Hillsborough, it's a new day.
And it's yours! Make the most of it. Right here.





Follow our driving directions to reach our Assisted Living and Memory Care in Chino, CA.

From Inland Empire

- West on 60 Freeway
- Exit Central Ave.
- Go North on Central Ave.

or

- West on 10 Freeway
- Exit Central Ave.
- Go South on Central Ave.

From Los Angeles County

- From the 57 / 71 Freeway Interchange
- Take 71 Freeway South to 60 Freeway East.
- Exit Central Ave.
- Go North on Central Ave.

From Orange County

- 91 Freeway East to 71 Freeway North to 60 Freeway East.
- Exit Central Ave.
- Go North on Central Ave.



PACIFICA
SENIOR LIVING
HILLSBOROUGH

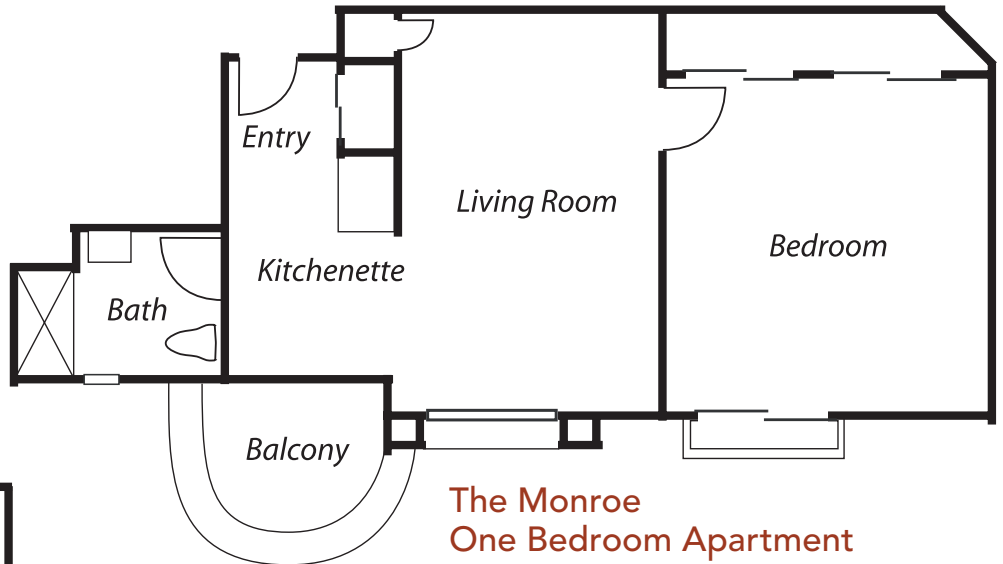
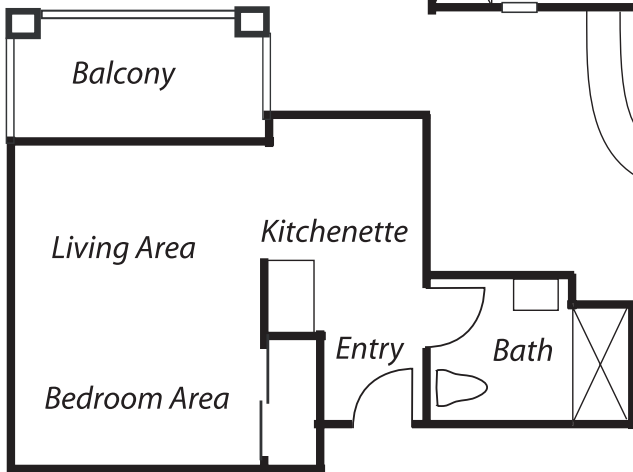
Assisted Living
Memory Care

License # 361880893



Floor Plans

**The Harlow
Studio Apartment**



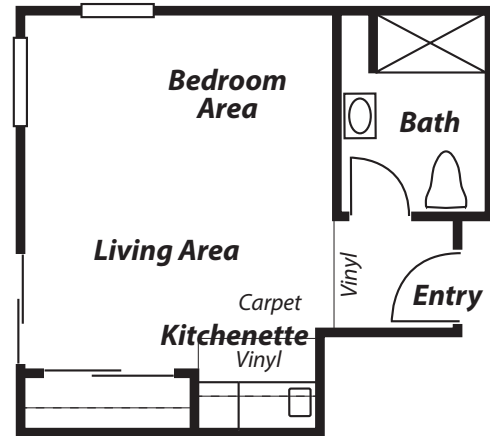
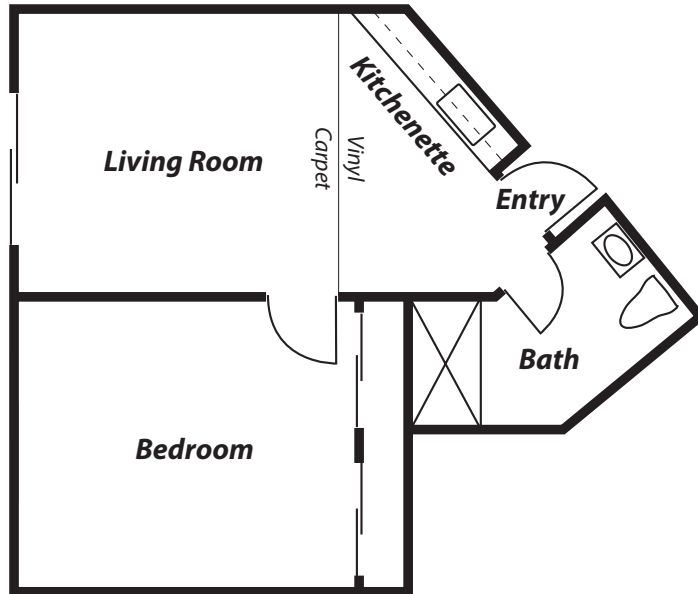

PACIFICA
SENIOR LIVING
HILLSBOROUGH

Assisted Living
Memory Care

License # 361880893

Floor Plans

The Garland One Bedroom Apartment



The Hayworth Studio Apartment



PACIFICA
SENIOR LIVING
HILLSBOROUGH

Assisted Living
Memory Care

License # 361880893

Heartland™ Assisted Living

Pacifica Hillsborough's Heartland™ Assisted Living program is ideal for those who may benefit from assistance to remain living independently while enjoying a fulfilling lifestyle. Offering a unique combination of people, lifestyles, services and care, Heartland Assisted Living delivers the optimal balance of independence and support.

Our dedicated staff provides personalized 24-hour assistance ensuring residents enjoy freedom of choice, dignity, respect and the comfort of care. And, families enjoy the peace of mind that comes from knowing their loved ones are happy and well cared for.

Services include:

- 3 nutritious meals served daily in a beautiful restaurant style setting
- All utilities (except telephone)
- Cable television
- Concierge service
- Scheduled transportation
- Weekly housekeeping
- Computer access with WIFI
- Life enrichment programs and activities



Heartland™ Assisted Living Rates

One inclusive monthly fee* includes the following Assisted Living services and amenities:

- Apartment home
- Apartment home maintenance
- 24-hour accessible staff
- Life-enrichment programs and activities
- Weekly housekeeping and linen services
- Scheduled transportation and day trips
- Community health resource referrals
- All utilities (except phone)
- Personal laundry facilities

**Incontinence products not included*



License # 361880893

909.548.2100 | 11918 Central Avenue | Chino, CA 91710 | www.PacificaHillsborough.com



Legacies™ Memory Care Rates

One monthly fee* includes the following Memory Care services and amenities:

- 3 nutritious meals served daily in a family home setting
- Assistance with meals
- Encourage and support participation in life enrichment programs and activities
- Wellness checks
- Transportation to medical appointments
- Weekly linen and personal laundry
- Daily housekeeping
- All utilities (except telephone)
- Cable television

**Incontinence products not included*


PACIFICA
SENIOR LIVING
HILLSBOROUGH
Assisted Living
Memory Care

License # 361880893

909.548.2100 | 11918 Central Avenue | Chino, CA 91710 | www.PacificaHillsborough.com



Transitions™ Memory Care Rates

Transitions™ Memory Care

Transitions™ is a new comprehensive memory care program which caters to the needs of individuals with early stages of memory loss in an open assisted living setting where they can benefit from social and emotional support.

One monthly fee* includes the following Memory Care services and amenities:

- 3 nutritious meals served daily in a family home setting
- Assistance with meals
- Encourage and support participation in life enrichment programs and activities
- Wellness checks
- Transportation to medical appointments
- Weekly linen and personal laundry
- Daily housekeeping
- All utilities (except telephone)
- Cable television

**Incontinence products not included*



License # 361880893

909.548.2100 | 11918 Central Avenue | Chino, CA 91710 | www.PacificaHillsborough.com



Legacies™ & Transitions Memory Care



Legacies™ Memory Care

Our Legacies™ Memory Care program provides those with Alzheimer's disease, dementia or other forms of memory loss with the support, care and respect they deserve to continue living a full, enriching life. Each resident receives a personalized care plan that is carefully implemented by our compassionate staff.

Transitions™ Memory Care

Transitions™ is a new comprehensive memory care program which caters to the needs of individuals with early stages of memory loss in an open assisted living setting where they can benefit from social and emotional support.



PACIFICA
SENIOR LIVING
HILLSBOROUGH
Assisted Living
Memory Care

License # 361880893

909.548.2100 | 11918 Central Avenue | Chino, CA 91710 | www.PacificaHillsborough.com



Respite Care



There are times in our lives when we need a little extra help. Pacifica's Respite Care program is available to allow families an opportunity to rest from the daily tasks required for a loved one.

Our program is also perfect for individuals who are recuperating from a hospital/rehabilitation stay, or to just simply experience the Hillsborough lifestyle. Trained team members work together to enhance continued dignity and trust.

We know the difference a smile and kind word can make.

Respite Care includes:

- A beautiful home-like environment
- Furnished apartment
- 24-hour personal care and assistance
- Heartland Assisted Living or Memory Care Services



PACIFICA
SENIOR LIVING
HILLSBOROUGH

Assisted Living
Memory Care

License # 361880893

909.548.2100 | 11918 Central Avenue | Chino, CA 91710 | www.PacificaHillsborough.com





Legacies™ Memory Care

Our Legacies™ Memory Care program provides those with Alzheimer's disease, dementia or other forms of memory loss with the support, care and respect they deserve to continue living a full, enriching life. Each resident receives a personalized care plan that is carefully implemented by our compassionate staff.

Adult Day Program

Our Adult Day Program, offered in select communities, is alive with engaging, enriching activities that invite and welcome all seniors to participate. Just as our residents enjoy personalized care, so do our program participants. This is the perfect way to meet new friends and share new experiences.

Respite Care

There are times in our lives when we need a little extra help. Pacifica's Respite Care program is available to allow families an opportunity to rest from the daily tasks required for a loved one. Our program is also perfect for individuals who are recuperating from a hospital/rehabilitation stay, or to just simply experience the Pacifica lifestyle. Trained team members work together to enhance continued dignity and trust. We know the difference a smile and kind word can make.

Companion Living

Companion Living enables seniors to enjoy all the care, services and amenities of a Pacifica Senior Living community with the added benefits of forging a new friendship, enhanced well-being and the cost savings of sharing a suite, just to name a few.

Designed for *Living Well*

Our communities are designed to help our residents live well, surrounded by services, amenities and programs.

Dining

Dining is a delight at Pacifica Senior Living. Meals are prepared fresh daily by our on-site chefs and are served in beautifully appointed restaurant-style settings by attentive dining room staff.

Life Enrichment

Our Life Enrichment programs offer a variety of opportunities to meet new friends, discover new interests, exercise and maintain health, enjoy exciting outings and excursions . . . and so much more.

Transportation

A full-time, certified driver is available through the community's transportation department. Scheduled services take residents to nearby medical appointments, shopping trips, religious services, banks, postal services and more.

Pet Friendly

Pets are part of the family, so Pacifica Senior Living communities are pet friendly* and have designated pet areas for convenience.

**Weight limitations*





PACIFICA
SENIOR LIVING

HILLSBOROUGH

It's a New Day.

And It's Yours!



PACIFICA
SENIOR LIVING

HILLSBOROUGH
Assisted Living
Memory Care

11918 Central Avenue, Chino, CA 91710
909.548.2100
www.PacificaHillsborough.com

For a list of Pacifica Senior Living communities, visit our website at
www.pacificaseniorliving.com



Lic. # 361880893