



**PACIFICA**  
SENIOR LIVING

FULL-SERVICE RETIREMENT LIVING

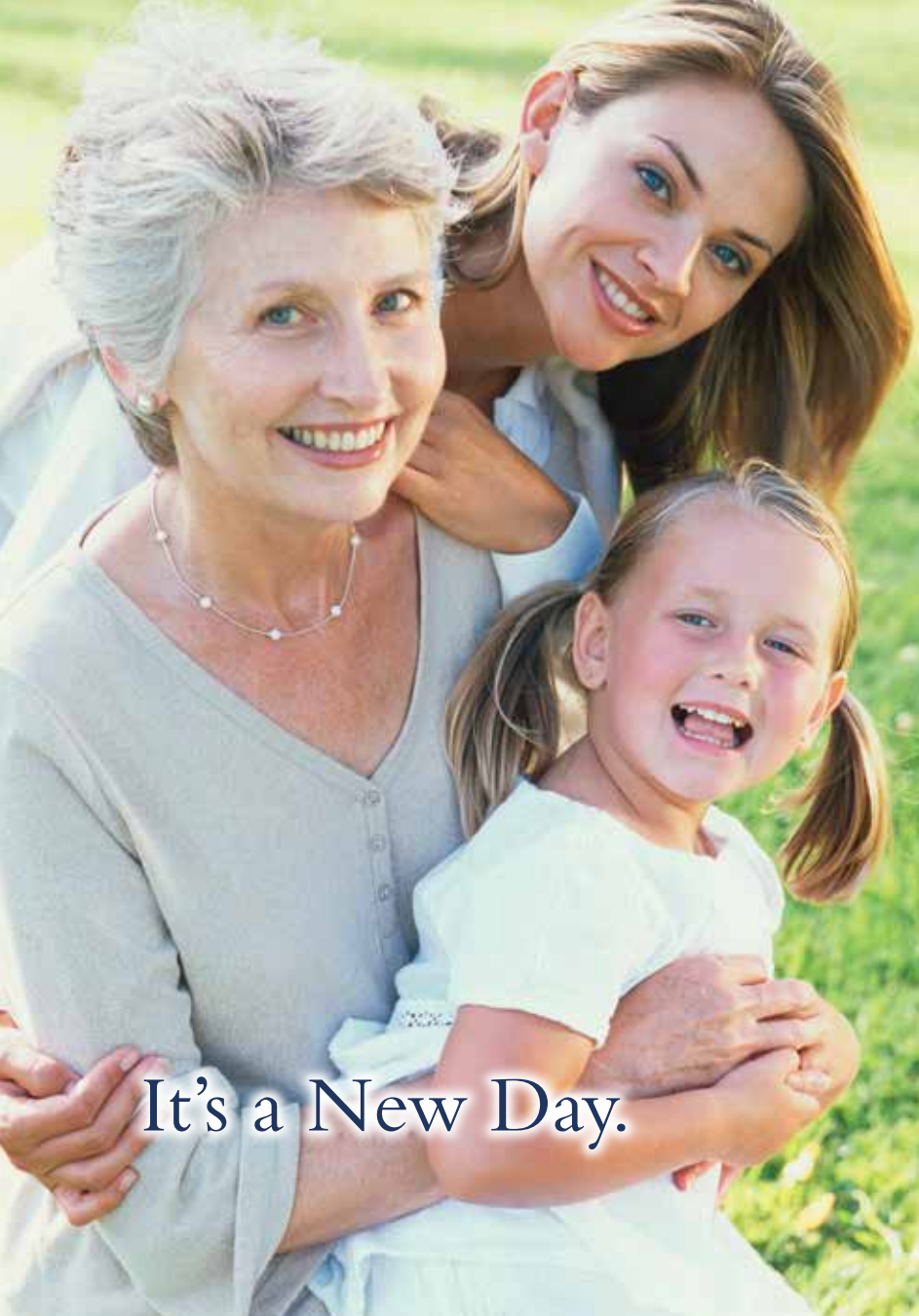
It's a New Day.

*And It's Yours!*

The background of the entire page is a repeating pattern of stylized, light gray leaves. The leaves are elongated and pointed at the tips, with some showing a central vein. They are arranged in a somewhat random, overlapping fashion across the white background.

## *Our Mission*

Privately owned, Pacifica Senior Living strives to create a lifestyle of independence and peace of mind for each individual and their family. We do what we love and what we truly believe in – providing compassionate, personalized care services with dignity and respect. Our dedicated, professional team supports each resident and goes above and beyond to help them feel at home.



It's a New Day.

At Pacifica Senior Living, we don't expect our residents to "fit" into one of our communities. We've designed our communities to "fit" them – to meet their different needs, preferences, dreams and goals. From independent living to assisted living and memory care, our communities welcome residents to live by their own design.

Our communities provide residents with every service and amenity they need, want and *deserve* to live each day just as they choose. We respect their individuality and understand that each person is in charge of the direction his or her life takes. We're simply here to support them. Every step of the journey.

*And It's Yours!*



# Senior Living Services

Pacifica Senior Living communities offer a variety of care and lifestyle choices to support our residents in living well.

## **Independent Living**

Active seniors retire to carefree living at its best. No housework. No yardwork. *No worries.* Just time to spend as they choose. Our communities feature spacious apartment homes, amenities, services and engaging programs – all designed to provide residents with the lifestyle to which they've aspired.

## **Heartland™ Assisted Living**

Delivering the optimal balance of independence and support, Heartland™ Assisted Living helps our residents live fulfilling, dignified lives. Each resident has a customized service plan that meets his or her individual needs. With support available 24 hours a day, our residents enjoy assistance with activities such as:

- Meals
- Medication Management
- Bathing & Dressing
- Mobility
- Transportation



# Welcome

Welcome to Pacifica Senior Living McMinnville. Our Memory Care community offers an atmosphere of home and comfort with intimate cottage settings that help reduce the feeling of loneliness and isolation.

Through our signature program, Legacies™ Memory Care, we offer those with memory challenges, including Alzheimer's disease and dementia, a supportive and enriching place to call home.

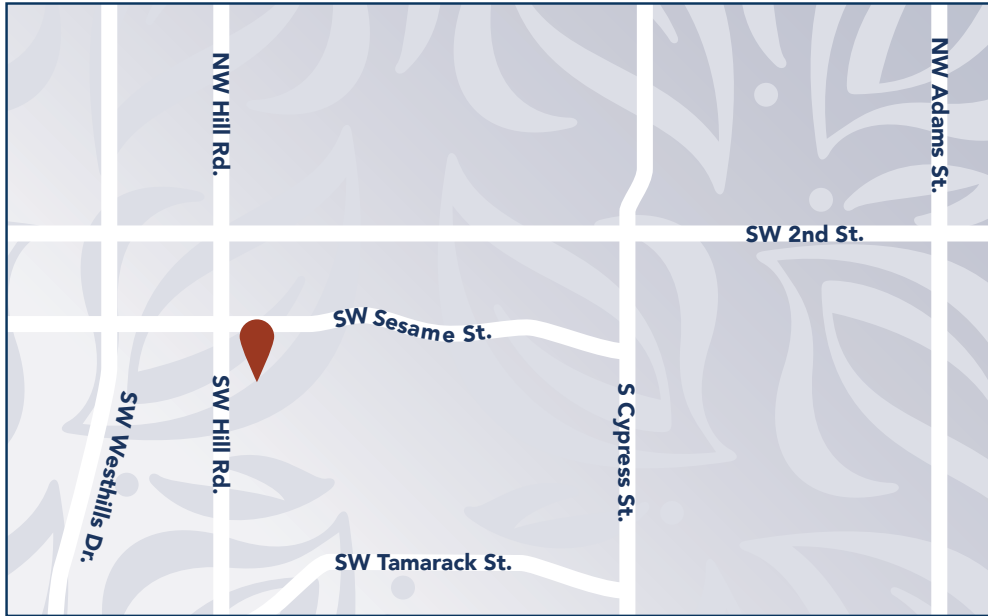
McMinnville provides its residents with the care they deserve delivered by a team of compassionate, patient and experienced professionals, complemented by homelike amenities, exceptional services and engaging activity programs.

Each cottage is individually tailored to meet the needs of each resident. The cottages are all connected by open outdoor spaces, scenic walking paths and patios to create a feeling of freedom and independence.

Best yet, we offer families the peace of mind of knowing that their loved ones are in good hands, delivered by people who genuinely care.

At Pacifica Senior Living McMinnville, it's a new day. And it's yours! Make the most of it. Right here.





Follow our driving directions to reach our Memory Care community in McMinnville.

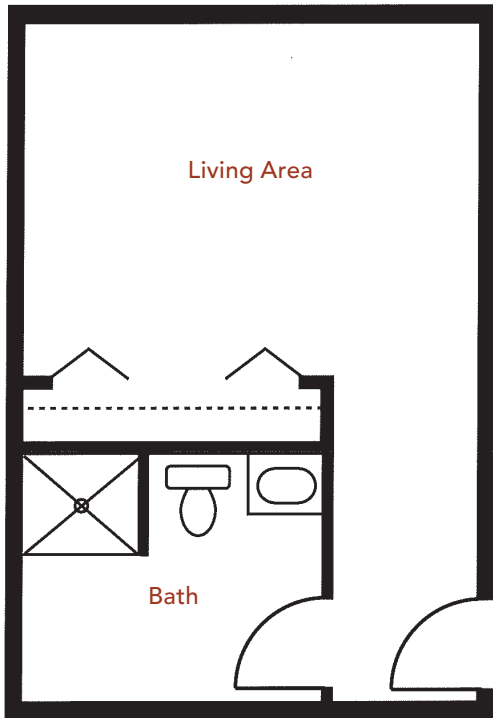
### Directions:

- From 99W turn onto SW 2nd Street
- From 2nd Street turn left onto Hill Road
- From Hill Road take the second driveway

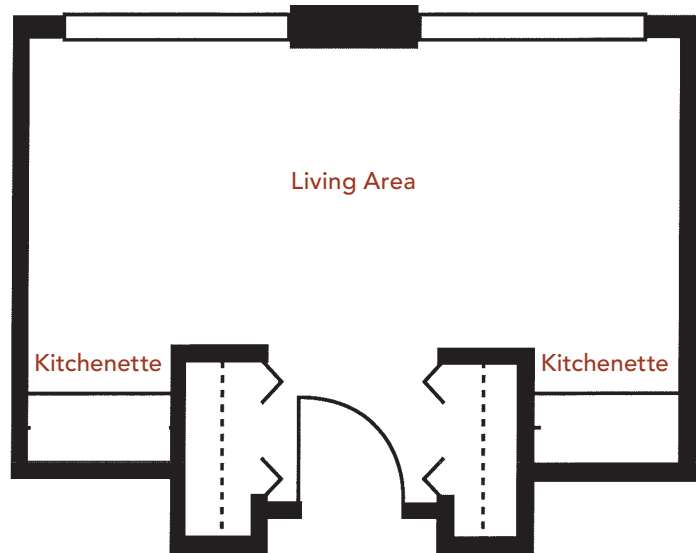


# Floor Plans

## Single Studio

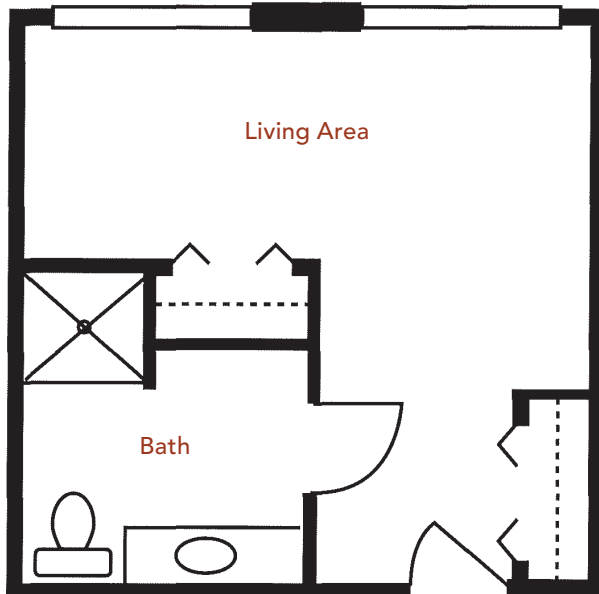


## Companion Suite 1

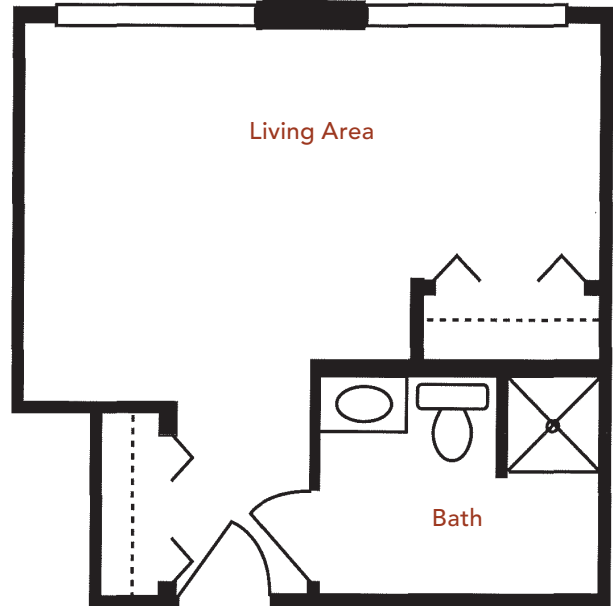


# Floor Plans

## Companion Suite 2



## Companion Suite 3



**PACIFICA**  
SENIOR LIVING  
McMINNVILLE  
Memory Care





# Legacies™ Memory Care



Our Legacies™ Memory Care Program provides those with Alzheimer's disease, dementia and other forms of memory loss with the support, care and respect they deserve in order to continue living a full, enriching life.

Memory loss affects different people in different ways. Our compassionate and highly trained Wellness Team creates a fully personalized care plan to meet each resident's unique needs, adapting plans as the behaviors associated with memory loss progress or change.

Our specialized approach to memory care is grounded in improving residents' quality of life. Residents engage in many interactive activities that, for example, improve coordination and strengthen social connections. One favorite program is Music and Memory<sup>SM</sup>, in which residents listen to carefully selected, individualized playlists of their favorite songs to help stimulate their minds, memories and cognitive functions.

## Life Enrichment Programs

- Individual and group activities, including gardening, watching movies and reminiscing
- Dementia-specific activities, such as memory boxes and scrapbooks
- Creative arts and music activities that include rhythm, singing and listening, including our Music & Memory<sup>SM</sup> program
- Extensive indoor/outdoor activity program with therapeutic exercises
- Exercise programs that include stretching, walking and balance activities
- Stress-free classes ranging from patterning to sensory stimulation
- Programs that encourage intergenerational relationships and community involvement
- Spiritual opportunities for people of all religions
- Scheduled outings
- Monthly support group and ongoing support for families



# Respite Care



At McMinnville, we admire and respect those who care for their loved one at home. But we also understand the challenges and stresses faced by a caregiver. There are times when you need a break from your responsibilities to focus on yourself.

Respite Care can provide you with the time and peace of mind you deserve, while providing your loved one with 24-hour care and access to our engaging lifestyle.

This short-term stay option is also ideal for those considering a move to McMinnville. Respite Care allows you and your loved one to experience the support and services we provide on a trial basis.

## Respite Care includes:

- A beautiful home-like environment
- Furnished apartment (private, semi-private or shared)
- Access to 24-hour personal care and assistance
- Three balanced meals and snacks daily
- Weekly housekeeping and personal laundry services



# Legacies™ Memory Care Rates

## One monthly fee\* includes the following Memory Care services and amenities:

- Licensed nurse on staff
- Well trained, professional staff providing 24-hour supervision
- Monthly training of staff
- Appropriate ratio of staff to residents
- Assistance with activities of daily living (bathing, dressing, grooming, eating, etc.)
- Supportive and caring environment
- Individualized care plans focusing on personal health concerns
- Medication management
- Three delicious meals served daily in a family home setting
- Daily monitoring of nutrition and diet needs
- Dietitian on staff for monthly monitoring of diets and weights
- Specialized programming including groups and one-on-one activities as well as our proprietary Music & Memory<sup>SM</sup> program
- Housekeeping, personal laundry and linen services

\*Incontinence products not included.

503.472.3509 | 320 SW Hill Road | McMinnville, OR 97128 | [www.PacificaMcMinnville.com](http://www.PacificaMcMinnville.com)







### **Legacies™ Memory Care**

Our Legacies™ Memory Care program provides those with Alzheimer's disease, dementia or other forms of memory loss with the support, care and respect they deserve to continue living a full, enriching life. Each resident receives a personalized care plan that is carefully implemented by our compassionate staff.

### **Adult Day Program**

Our Adult Day Program, offered in select communities, is alive with engaging, enriching activities that invite and welcome all seniors to participate. Just as our residents enjoy personalized care, so do our program participants. This is the perfect way to meet new friends and share new experiences.

### **Respite Care**

There are times in our lives when we need a little extra help. Pacifica's Respite Care program is available to allow families an opportunity to rest from the daily tasks required for a loved one. Our program is also perfect for individuals who are recuperating from a hospital/rehabilitation stay, or to just simply experience the Pacifica lifestyle. Trained team members work together to enhance continued dignity and trust. We know the difference a smile and kind word can make.

### **Companion Living**

Companion Living enables seniors to enjoy all the care, services and amenities of a Pacifica Senior Living community with the added benefits of forging a new friendship, enhanced well-being and the cost savings of sharing a suite, just to name a few.

# Designed for *Living Well*

Our communities are designed to help our residents live well, surrounded by services, amenities and programs.

## **Dining**

Dining is a delight at Pacifica Senior Living. Meals are prepared fresh daily by our on-site chefs and are served in beautifully appointed restaurant-style settings by attentive dining room staff.

## **Life Enrichment**

Our Life Enrichment programs offer a variety of opportunities to meet new friends, discover new interests, exercise and maintain health, enjoy exciting outings and excursions . . . and so much more.

## **Transportation**

A full-time, certified chauffeur is available through the community's transportation department. Scheduled services take residents to nearby medical appointments, shopping trips, religious services, banks, postal services and more.

## **Pet Friendly**

Pets are part of the family, so Pacifica Senior Living communities are pet friendly\* and have designated pet areas for convenience.

*\*Weight limitations*





# PACIFICA SENIOR LIVING

For a list of Pacifica Senior Living  
communities, visit our website at  
[www.pacificaseniorliving.com](http://www.pacificaseniorliving.com)

FULL-SERVICE RETIREMENT LIVING

